



FALL 2022

PENDLETON®

HOME

RETAIL PRICING

Product that gives back!

**made in USA**



**NATIONAL PARK BLANKET**

Since the early 1900s, Pendleton has honored our National Parks with a collection of distinctive blankets. Each has a special label with the park name and image of an important natural feature. Woven in our own Northwest woolen mill.

Dry clean. 100% pure virgin wool. Made in the USA.

|       |           |          |             |          |
|-------|-----------|----------|-------------|----------|
| ZA130 | Twin (T)  | 66 x 90" | 168 x 229cm | \$239.00 |
| ZA132 | Full (F)  | 80 x 90" | 203 x 229cm | \$269.00 |
| ZA131 | Queen (Q) | 90 x 90" | 229 x 229cm | \$329.00 |



52054  
Yosemite  
(F, Q)

50750  
Grand Canyon  
(F, Q)

53569  
Olympic  
(F, Q)

53853  
Zion  
(F, Q)

50717 Glacier  
(T, F, Q)  
*Not available in Canada.*

50738  
Crater Lake  
(F, Q)

50320  
Acadia  
(F, Q)

*New Recolor!*  
53704 Yellowstone  
(F, Q)  
Available 03/25



*New product offering!* **NATIONAL PARK THROW**

Adventure-ready Pendleton National Park Throw with a leather carrier, and whipstitch binding.

Dry clean. 90% wool, 10% cotton. Imported.

|       |          |           |          |
|-------|----------|-----------|----------|
| XF133 | 54 x 72" | 137 x 183 | \$199.00 |
|-------|----------|-----------|----------|



52054  
Yosemite  
Available 04/25



50750  
Grand Canyon  
Available 04/25



53569  
Olympic  
Available 04/25



53853  
Zion  
Available 04/25



50717  
Glacier  
Available 04/25  
*Not available in Canada*



50738  
Crater Lake  
Available 04/25



50320  
Acadia  
Available 04/25



53704  
Yellowstone  
Available 04/25



**YAKIMA® CAMP BLANKET**

*Our camp blankets and throws are favorites. Soft, durable wool in richly colored mixed yarns and iconic stripes woven in rustic patterns inspired by the ombre blankets that cowboys unrolled at camp after long days of riding the range.*

Dry clean. 86% wool, 14% cotton. Made in the USA.

|       |                                |          |             |          |
|-------|--------------------------------|----------|-------------|----------|
| ZAI58 | Throw (Stripes run vertically) | 54 x 66" | 137 x 168cm | \$129.00 |
| ZAI61 | Twin (Without carrier)         | 66 x 84" | 168 x 213cm | \$169.00 |
| ZAI60 | Twin (With carrier)            | 66 x 84" | 168 x 213cm | \$189.00 |
| ZAI62 | Queen                          | 90 x 90" | 229 x 229cm | \$239.00 |



53956  
Oxford



53764  
High Ridge



50053  
Green Heather



52553  
Mineral Umber



52552  
Lake



Standard Blanket Carrier included on ZAI60

See pages 38 & 39 for more Yakima Stripe product



**PREMIUM LEATHER CARRIER**

*A new luxury leather carrier with copper hardware and debossed logo. Available in two sizes to fit blankets (large) and fringed throws (small).*

Imported.  
Large \$ 39.50  
Small \$ 34.50



XA164-55159 Large



XC328-55159 Small

**CARRY ALONG MOTOR ROBE**

Called steamer rugs during the early 20th century, these blankets warmed traveling passengers. Ideal for autumn football games, summer picnics, stowing in the car for unexpected adventures, or curling up at home. Each Motor Robe comes with a convenient carrier, featuring a handle and a shoulder strap.

Dry clean. 100% wool.  
 52 x 66" + 3½" self fringe | 132 x 168cm + 9cm  
 \$99.50



New!



ZC333-53595  
**Rob Roy Charcoal**  
 Available 03/25

New!



ZC333-53596  
**Tabor Plaid**  
 Available 03/25

New!



ZC333-53597  
**Raleigh Plaid**  
 Available 03/25

New!



ZC333-57001  
**Hillsdale Plaid**  
 Available 03/25



ZC333-53850  
**Steens Mountain**



ZC333-53852  
**Brookings**



ZC333-53760  
**Ruby Beach**



ZC333-52453  
**Charcoal Stewart**



ZC333-53762  
**Metolius**



ZC333-53761  
**Shelter Bay Plaid**



ZC333-53589  
**Vintage Dress Stewart**



ZC333-53086  
**Rob Roy Red**

**ROLL-UP BLANKET** | Pendleton protection rain or shine! Nylon-backed wool blankets have a special roll-up design and built-in carrying handle.

Dry clean. 100% pure virgin wool blanket with 100% nylon back.  
 60 x 70" | 152 x 178cm | \$169.00

New!



XR334-53597  
**Raleigh Plaid**  
 Available 03/25



XR334-53587  
**Summit Lake**



XR334-53589  
**Vintage Dress Stewart**



XR334-53086  
**Rob Roy**



Product that gives back!

**made in USA** BRIDGER STRIPE COLLECTION

The Bridger Stripe blanket collection has the soft hand and all-wool construction of a Pendleton Park Blanket, with a distinctly different reverse for two looks in one blanket.

**Blanket** | Dry clean. 100% pure virgin wool. Made in the USA.  
**Pillow** | Spot clean. 82% wool, 18% cotton jacquard face, suede reverse and cording.  
Made in the USA of USA and imported materials.

|       |        |          |             |          |
|-------|--------|----------|-------------|----------|
| ZA207 | Twin   | 66 x 90" | 168 x 229cm | \$239.00 |
| ZA209 | Queen  | 90 x 90" | 229 x 229cm | \$329.00 |
| XP219 | Pillow | 18 x 18" | 46 x 46cm   | \$ 99.50 |

New!



53602  
Cascade Stripe  
Available 05/25



57031  
Trail Stripe



XP219-54679  
Scout Stripe

New product offering!

**WOOL THROW WITH CARRIER**

The Bridger Stripe collection offered in an easy-to-transport throw, with a distinctly different reverse for two looks in one.

Whipstitch binding Dry clean. 100% wool. Imported.

54 x 66" | 137 x 168cm  
\$199.00



XF232-53666  
Boulder Stripe  
Available 05/25



XF232-53602  
Cascade Stripe  
Available 05/25



XF232-57031  
Trail Stripe  
Available 05/25

New!

**made in USA** 5TH AVENUE THROW

The ultimate indulgence. Superfine merino wool is softly brushed for a fleecy hand that is soft to the touch. An unforgettable gift, especially for yourself.

Dry clean. 100% merino wool. Made in the USA.  
54 x 72" + 3" fringe | 137 x 183cm + 8cm fringe  
\$199.00



ZB296-53594  
Green Heather  
Available 03/25




ZB296-53575  
Mineral Umber



 ZB296-50717  
Glacier  
Not available in Canada.



 ZB296-53256  
Acadia

**made in USA** HEIRLOOM BLANKET | The fine-wool fleece of white merino sheep is woven into this luxuriously thick, extra-soft blanket finished on all four sides with matching satin binding for a blanket that is destined to become an heirloom. Makes an incomparable wedding, anniversary or graduation gift, well-suited for monogramming.

Dry clean. 100% virgin merino wool. Made in the USA.  
ZA015 Twin 66 x 90" | 168 x 229cm | \$259.00  
ZA016 Queen 90 x 90" | 229 x 229cm | \$319.00  
ZA017 King 108 x 90" | 274 x 229cm | \$349.00



50010 White

## PENDLETON ECO-WISE WOOL®

Wool is an environmentally friendly and naturally renewable fiber. This fabric can be recycled or composted as a healthy additive to the soil. From the sheep to the shelf, Pendleton Eco-Wise Wool® passes strict standards of sustainability and responsible environmental stewardship.



made in  
**USA**

### WASHABLE PENDLETON ECO-WISE WOOL® BLANKET

These whipstitched bed blankets are richly colored, delightful to touch, and created to leave the lightest impact on the earth.

Machine washable, tumble dry.  
100% pure virgin wool. Made  
in the USA.

|       |       |           |             |          |
|-------|-------|-----------|-------------|----------|
| ZAI73 | Twin  | 66 x 96"  | 168 x 244cm | \$169.00 |
| ZAI74 | Queen | 90 x 96"  | 229 x 244cm | \$239.00 |
| ZAI75 | King  | 108 x 96" | 274 x 244cm | \$269.00 |
| XPI76 | Sham  | 20 x 26"  | 51 x 66cm   | \$ 99.50 |

Solid colors only

PENDLETON ECO-WISE WOOL®



50560  
White



50932  
Camel Heather



52679  
Grey Heather



52711  
Fawn Heather



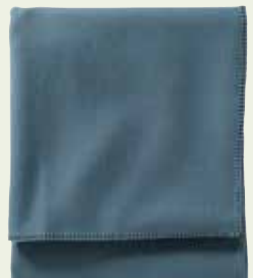
52943  
Shale



53865  
Navy Heather



52307  
Charcoal



53441  
Dusk

made in  
**USA**

### WASHABLE PENDLETON ECO-WISE WOOL® BLANKET

*These whipstitched bed blankets are richly colored, delightful to touch, and created to leave the lightest impact on the earth.*

Machine washable, tumble dry.  
100% pure virgin wool. Made  
in the USA.

|       |       |           |             |          |
|-------|-------|-----------|-------------|----------|
| ZAI73 | Twin  | 66 x 96"  | 168 x 244cm | \$169.00 |
| ZAI74 | Queen | 90 x 96"  | 229 x 244cm | \$239.00 |
| ZAI75 | King  | 108 x 96" | 274 x 244cm | \$269.00 |
| XPI76 | Sham  | 20 x 26"  | 51 x 66cm   | \$ 99.50 |

*Solid colors only*

*New!*



57017 Red Jasper  
Available 03/25

*New!*



57018 Misty Ridge  
Available 03/25



53402 Pearl



50539 Rob Roy Red



53809 Rob Roy Ivory



53866 Camp Plaid



57042 Vintage Glacier



52961 Midnight Navy Stripe



53773 Irving Stripe Taupe



53774 Irving Stripe Grey

made in  
**USA**

### ECO-WISE WOOL® WASHABLE THROW

*An affordable luxury and everyday necessity. The exquisite loft, soft hand, and 3" rolled European fringe are fine quality features often seen at higher price points.*

Machine washable, tumble dry. 100% wool. Made in the USA.  
54 x 60" + 3" fringe | 137 x 152cm + 8cm | \$149.00



ZB215-53973 Cabin Stripe Fawn



ZB215-53970 Cabin Stripe Grey



ZB215-53972 Cabin Stripe Oxford



ZB215-53971 Cabin Stripe Shale



ZB215-53878 Shale



ZB215-53402 Pearl



ZB215-53879 Navy / Camel



ZB215-52956 Black / Ivory



ZB215-52959 Juniper / Fawn

### ORGANIC COTTON JACQUARD BLANKET

Over a hundred years after using cotton in the warp of our wool blankets, it has come to the face of some of our most beautiful jacquards. Snuggle up with luxurious cotton that mirrors the superb quality of Pendleton wool blankets, loomed exclusively for us in Germany. Oeko-Tex® Standard 100 certified.



Machine washable. 100% organic cotton. Made in Germany. Turned hem. 230 GSM.

|       |               |           |  |             |  |          |
|-------|---------------|-----------|--|-------------|--|----------|
| XF308 | Throw         | 60 x 70"  |  | 152 x 178cm |  | \$ 99.50 |
| XA310 | Twin          | 66 x 96"  |  | 168 x 244cm |  | \$149.00 |
| XA312 | Queen         | 96 x 96"  |  | 244 x 244cm |  | \$179.00 |
| XA314 | King          | 108 x 96" |  | 274 x 244cm |  | \$199.00 |
| XP288 | Pillow Covers | 20 x 20"  |  | 51 x 51cm   |  | \$ 39.50 |

*Insert not included*

New!



55321  
Silver City Denim  
Available 08/25

New!



55322  
Silver City Camel  
Available 08/25



53957  
Rancho Arroyo Shale



53959  
Rob Roy Slate



53960  
Rob Roy Shale



53958  
Rancho Arroyo Pebble

New product offering!  
Pillow insert not included



XP288-55321  
Silver City Denim  
Available 08/25



XP288-55322  
Silver City Camel  
Available 08/25



XP288-53957  
Rancho Arroyo Shale



XP288-53958  
Rancho Arroyo Pebble



**New organic content! ORGANIC COTTON THROW GIFT PACK**

*Super soft, super giftable set of two cotton throws, packaged for easy display. Specially loomed for Pendleton in Germany. Turned hem. Two throws per set. Oeko-Tex® Standard 100 certified.*



Machine washable. 100% organic cotton. Imported.

50 x 60" | 127x 152 cm | \$ 129.00



**XF636-55324**  
Tecopa Hills Oxford  
Available 08/25



**XF636-55323**  
Tecopa Hills Grey  
Available 08/25



**XF636-55224**  
Trail Ridge Navy  
Available 08/25



**XF636-55225**  
Trail Ridge Oat  
Available 08/25

**New! PACKABLE THROWS**

*Light and packable travel blankets in Pendleton patterns are machine washable for go-anywhere fun. Available only in USA.*

100% recycled polyester face and reverse. 100% polyester fill. Imported.

50 x 70" | 20 x 28cm | \$ 99.50



**XF400-55335**  
White Sands  
Available 07/25




**XF400-55336**  
Pagosa Springs  
Available 07/25



**XF400-55338**  
Pilot Rock  
Available 07/25



**XF400-55337**  
Spider Rock  
Available 07/25

 **Product that gives back!**

**made in USA**

**ARTIST COLLECTION**

*Pendleton works with artists to bring their work to the loom in a series dedicated to American artistry.*

Dry clean. 82% pure virgin wool, 18% cotton. Unnapped, felt bound. Made in the USA.

ZF613 64 x 72" | 163 x 183cm | \$279.00

**New! RESTING PLACE**

By Logan Maxwell Hagege  
A well-worn hat on a split-rail fence offers a moment of respite for the rider who hung it there. Logan Maxwell Hagege is a Los Angeles-based contemporary artist whose modern visions of the American West use repeating shapes to create a visual narrative for each composition.



ZF613-57006  
Available 05/25

**A HORSE CALLED PAINT**

By Judd Thompson  
In "A Horse Called Paint," a dark horse gallops, silhouetted against a snowy night. The original painting is by Montana artist Judd Thompson, who uses his passion for color theory in a variety of media, including painting and sculpture.



ZF613-53831



See artist's biography on page 43



See artist's biography on page 43

**made in USA**

**CRAFTSMAN COLLECTION**

*Celebrate Pendleton craftsmanship with modern innovations from a century-old mill. Rich colors, muted beauty and hand-cut rounded corners recall heirloom blankets from our mill's earliest days. One side is napped for softness and warmth. The reverse is unnapped, to showcase the pattern.*

Dry clean. 82% wool, 18% cotton. Made in the USA. Napped face, unnapped reverse, whipstitch binding.

64 x 80" | 163 x 203cm | \$289.00



ZE797-54746  
Journey West



ZE797-53606  
Canyonlands



ZE797-16013  
Sierra Ridge

**made in USA**

**PRESERVATION SERIES**

*Based on an original weaving in The Durango Collection®, Center of Southwest Studies Collection. Pendleton designers work with curators and collectors to select work, establish provenance, and attribute textiles to original weavers whenever possible. Each blanket purchase generates a donation to Native American arts, education and health.*

Dry clean. 82% pure virgin wool, 18% cotton. Made in the USA. Unnapped.

Robe 64 x 80" | 163 x 203cm \$279.00



ZK960-53777  
PS01



ZK960-53778  
PS02



ZK960-53946  
PS03

*Available as a bedding collection.*



## LEGENDARY COLLECTION

The original, exclusive designs of the *Legendary Collection* are inspired by Native American art, beliefs, ceremonies and heroes. Native Americans were our first and remain our best customers, and a Pendleton blanket continues to signify honor and respect. Blankets are gifted to acknowledge births, deaths, weddings, graduations, milestones and accomplishments; collectible heirlooms of tomorrow that can be used and enjoyed today. See artists' biographies on pages 42-43.

Each blanket has a commemorative label. Dry clean. 82% pure virgin wool, 18% cotton. Made in the USA. All blankets are napped, felt bound.

64 x 80" | 163 x 203cm | \$279.00



ZL494-57012  
Available 03/25

### CEDAR CANYON

The cedar, considered sacred by many Native American tribes, represents overall wellbeing and protection. Its bark and berries can be used for medicine and food, with wood used for building and carving. Cedar Canyon pays homage to the tree's legendary utility and strength with a pattern of supple bark strips and an enclosing, protective diamond. Artist and designer Ramona Sakiestewa (Hopi), known for her architectural work at the National Museum of the American Indian, created this design.



Ramona Sakiestewa (Hopi) is an internationally renowned artist and designer who grew up in the American Southwest. Her portfolio includes fine art tapestries, works on paper, and architectural design. Her works reside in public, private, corporate and museum collections in the United States and abroad, with numerous awards including the New Mexico Governor's Award for Excellence in the Arts. "As artists, we have to be prepared to reinvent ourselves many times."



ZL494-53779  
Rodeo Sisters



See artist's biography on page 43



ZL494-53452  
In Their Element



See artist's biography on page 43



ZL494-53873  
Buffalo Nation



See artist's biography on page 43



ZL494-50174  
Creation Turtle



ZL494-50183  
Circle of Life



ZL494-53814  
Celebrate the Horse



ZL494-52242  
Shared Spirits

\$ Product that gives back!



made in USA



Since 1990, Pendleton has been proud to support the work of the American Indian College Fund. Sales of these blankets fund scholarships to tribal colleges and make a difference in the lives of students throughout the country.

Royalties for each blanket sold go directly to provide scholarships for deserving students. Learn more at [collegefund.org](http://collegefund.org). Beginning in 2020, College Fund blanket designs have been selected through a national student competition. Learn more about the talented winners on page 42.

Dry clean. 82% pure virgin wool, 18% cotton. Made in the USA. Unnapped. Felt bound unless otherwise noted. 64 x 80" | 163 x 203cm | \$329.00



**ZE788-57004**  
**Unity**  
Available 03/25

**New! UNITY**

The Lakota word for horse is Sunka Wakan, or Holy Dog. At sunrise, a horse gallops through a Lakota village of traditional tipis. A geometric Morning Star greets the dawn over each dwelling, announcing the coming of sunlight to the earth and the gift of a new day. The horse or Holy Dog stands for strength and unity, the central figure in a design that represents how Nature and Native people are one.



Chelysa Owens-Cyr (Fort Peck Assiniboine & Dakota Sioux/Pasqua First Nations Cree) is an artist from Montana's Fort Peck Indian Reservation. As a College Fund scholar, she studies Business Administration at Fort Peck Community College. She is a self-taught contemporary ledger artist, beader, graphic designer and painter, influenced by her family and culture. "I work with many mediums to share my personal teachings, beliefs, stories and visions with the people."



Nike is committed to getting youth in Native American and Indigenous communities in North America moving so they can lead healthier, happier and more successful lives. Through Nike's N7 Fund, we support organizations that provide sport and physical activity programming to youth in these communities.



**ZE777-52836**  
**7 Peaks**  
Whipstitch Binding

\*ONLY AVAILABLE IN NORTH AMERICA



**ZE777-53804**  
**7 Generations**  
Suede Binding

\*ONLY AVAILABLE IN NORTH AMERICA

**New!**



Also available as a crib blanket, ZE786-53804. See page 30.



See artist's biography on page 42

Notice: Pendleton Woolen Mills complies with the Indian Arts and Crafts Act | The Indian Arts and Crafts Act of 1990 (P.L. 101-644), as amended, is a truth-in-marketing law that prohibits the offer or display for sale, or sale, of any art or craft product in a manner that falsely suggests it is Indian produced, an Indian product, or the product of a particular Indian Tribe. Covering all traditional and contemporary American Indian and Indian-style art and craftwork produced after 1935, the Act carries both criminal and civil penalties. For more information on the Act, please visit <https://www.doi.gov/iacb>



Dry clean. 82% pure virgin wool, 18% cotton. Made in the USA. Unnapped, felt binding.

64 x 80" | 163 x 203cm | \$329.00  
unless otherwise noted



**ZE788-53955**  
Courage to Bloom,  
Whipstitch Binding



Photo by: Justin Stewart  
See artist's biography  
on page 42



**ZE788-52484**  
Raven and the  
Box of Knowledge



See artist's biography  
on page 42



**ZE788-50475**  
Water



**ZE788-50474**  
Earth



**ZE788-53422**  
Gift of the Earth



**ZG736-50401**  
Eagle

39 x 68" | 99 x 173cm | \$229.00

**AMERICAN INDIAN  
COLLEGE FUND  
MUG COLLECTION**


See page 38 for details

XK873-55221



**ZE789-53311**  
Naskan

68 x 39" | 173 x 99cm | \$229.00

 Product that gives back!

**made in USA** **BLANKET ROBE**

These blankets are all available in robe size, the size often preferred by Native Americans for gifting and ceremonial purposes. A robe-sized blanket fits a twin or full-size bed, and works well as a wall hanging, throw, or folded at the foot of a bed. Select colors are available in larger sizes.

Dry clean. 82% pure virgin wool, 18% cotton. Made in the USA. Napped, felt binding.

|        |           |           |             |          |
|--------|-----------|-----------|-------------|----------|
| ZD 411 | Robe (R)  | 64 x 80"  | 163 x 203cm | \$279.00 |
| ZD 412 | Shawl (S) | 68 x 68"  | 173 x 173cm | \$289.00 |
| ZD 413 | Queen (Q) | 90 x 90"  | 229 x 229cm | \$439.00 |
| ZD 403 | King (K)  | 108 x 90" | 274 x 229cm | \$499.00 |
| XP 573 | Pillow    | 16 x 16"  | 41 x 41cm   | \$ 99.50 |

**CHIEF JOSEPH PATTERN** | Designed early in the 1920s, the Chief Joseph design continues to be one of Pendleton's longest running and most popular blankets. It commemorates the heroism of one of the Northwest's greatest Nez Perce leaders, Chief Joseph.



A portion of the proceeds from the sales of this blanket support women's health in the Native American community through N.A.R.A. (Native American Rehabilitation Association).



55184 Rosewood (R, S, Q, K)  
Available 01/25



53157 Aegean (R, S)  
Available 01/25



53158 Chili (R, S)  
Available 01/25



51106 Ivory (R, S, Q, K)



51114 Khaki (R, S, Q, K)



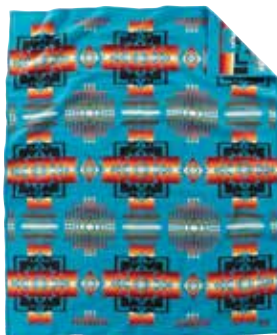
53803 Slate (R, S, Q, K)



51108 Grey (R, S, Q, K)



51128 Aqua (R, S, Q, K)



51124 Turquoise (R, S)



51120 Maroon (R, S)



51130 Indigo (R, S)



51105 Black (R, S)

**CHIEF JOSEPH PILLOW**

Spot clean. Made in the USA with feather fill pillow insert. Unnapped. Felt bound.



53803  
Slate



51128  
Aqua



51114  
Khaki



51105  
Black

**made in USA** **FRINGED SHAWLS**

Historically, Native American shawls were worn for traditional dances and ceremonies. Women today wear their shawls to family gatherings, dances, and festivities. We offer all of the Chief Joseph children's blanket designs as square, fringed children's shawls, with 4" fringe on all four sides.

Made in the USA.

68 x 68" + 4" fringe | 173 x 173cm + 10cm | \$289.00

Shawls available in these patterns:

Chief Joseph pg 14 & 31 • Harding pg 15 • Pilot Rock, Juniper Mesa, Silver Bark pg 17 • Serape pg 21



**made in USA** **HARDING**

In 1923 President Harding and his wife visited the West to dedicate a portion of the Old Oregon Trail. At the ceremony, local Cayuse and Umatilla chiefs presented the First Lady with a Pendleton shawl inspired by the already famous Chief Joseph blanket.

Dry clean. 82% wool, 18% cotton. Made in the USA. Napped, felt binding.

ZD421 Robe 64 x 80" | 163 x 203cm | \$279.00  
 ZD422 Shawl 68 x 68" | 173 x 173cm | \$289.00



53052 Thyme



53949 Navy



53607 Ivory



53361 Oxford

**made in USA** **SADDLE BLANKET**

Dry clean. 82% pure virgin wool, 18% cotton. Made in the USA. Unnapped, whipstitch binding.

ZG725 Saddle Blanket 68 x 39" | 173 x 99cm | \$199.00  
 XP515 Pillow 16 x 16" | 41 x 41cm | \$ 99.50

**ROCK POINT COLLECTION**

Rock Point Arizona is part of the Diné/Navajo Nation that covers more than 17 million acres in the Southwest. Rugged red rock formations surround this community. On a plain background representing the desert floor, formations like Red Mesa, Two Sisters, North Arch, and Whale Rock, or Tsé Biná'ookaahí are symbolized by repeating groups of geometric forms. These patterns alternate with Los Ojos motifs, which are joined together with arrows that point to the past and the future.



\$ 98.00  
 \$ 46.00

ZG725-53942 Natural



ZG725-53941 Black



ZG725-53944 Aegean



ZG725-53943 Red



**BLANKET ROBE**

Dry clean. 82% pure virgin wool, 18% cotton. Made in the USA. Felt bound, unless otherwise noted.

64 x 80" | 163 x 203cm | \$279.00

**New! LOST TRAIL**

In September of 1805, the Lewis & Clark Corps of Discovery struggled to find a trail through the Bitterroot Mountains. Their travails gave name to Lost Trail Pass, crossing the Idaho/Montana border. Two peaked bands represent the Columbia River Basin drainages divided by Lost Trail: Bitterroot Clark-Fork to the north, and Salmon to the south. The middle band represents the Lost Trail National Wildlife Refuge, which provides crucial winter habitat to fish, fowl, and mammals large and small. Unnapped.

Available as a bedding collection.



ZE493-57000  
Available 03/25

**New! SMITH ROCK**

The towering face of Smith Rock overlooks a bend in Oregon's Crooked River, challenging climbers from around the world to scale its heights. Considered by many to be the birthplace of American sport climbing, Smith Rock State Park offers several thousand climbs, many of them bolted, in its 650 acres of high peaks, deep river canyons, and hiking trails like Misery Ridge. This pattern, based on a traditional nine-element blanket, alternates the park's peaks with the many paths traveled by hikers and climbers. Unnapped.

Available as a bedding collection.



ZE493-53513  
Available 03/25

**New! DIAMOND PEAK**

In central Oregon, Diamond Peak shows the marks of time. Rising to 8,748 feet, it was carved by glaciers into a range of mountainous subfeatures: Mount Yorlan, Lakeview Mountain, and dramatic cinder cones. This slumbering shield volcano has not erupted in 10,000 years, making it dormant, perhaps extinct. The pattern's peaks and valleys echo the landscape, part of the Pacific Crest Trail and ancestral territory of many Oregon tribes, including the Klamath, Modoc and Yahooskin peoples. Unnapped.



ZE493-53590  
Available 03/25

**New! AGATE BEACH**

Agate, a banded form of chalcedony, formed billions of years ago in volcanic pockets. In the cooler seasons of the year, storms and waves dislodge agates from gravel beds along the Oregon shoreline. Beachcombers and rock hounds search for stones that range in color from inky black, to vivid fire tones, to rare and valuable blues, to soft greys and misty pinks. In this pattern, striated stones emerge from a sandy background to glow softly under Oregon's gentle skies. Napped.

Available as a bedding collection.



ZE477-57011  
Available 03/25

**New! LOS LUNAS**

Colorful bands of multi-directional arrows symbolize the routes of people who made petroglyphs—carvings on rock walls—to record their specific cultures and journeys through the area now known as Los Lunas. This small New Mexico town is neighbor to Laguna Pueblo, the Rio Grande Valley, and Hidden Mountain. The area's abundant petroglyphs include figures seen nowhere else in the Americas. The carvings on Pueblo land are protected and treasured as centuries-old messages from the past. Unnapped.



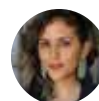
ZE493-53978  
Available 01/25

**New! GATHER**

Like the piñon tree, members of the Navajo Nation gather resources to survive an increasingly precarious water supply. Diné artist Emma Robbins has gathered symbols of endurance for this design; a sáanii (maternal grandmother) scarf crossed by traditional sash belts used in ceremonies and childbirth. At the center, a young woman's bracelet of silver is set with turquoise, a stone formed by rare rains flowing through arid layers of rock. A portion of blanket sales will support DigDeep's Navajo Water Project. Napped.



ZK480-53160  
Available 01/25



See artist's biography on page 42





**BLANKET ROBE**

Dry clean. 82% pure virgin wool, 18% cotton. Made in the USA. Felt bound, unless otherwise noted.

Robe 64 x 80" | 163 x 203cm | \$279.00  
Pillow 18 x 18" | 46 x 46cm | \$ 99.50

**WYETH TRAIL**

Pure strains of Native American crops are hard to come by. Seed Saver banks in Decorah, Iowa, and Tucson, Arizona, store precious seeds from long ago plants. In the harmonious colors of ancient corn varieties, a balanced pattern of rows echoes the ancient gardens. Unnapped.

**PILLOW** | Spot clean. 82% wool, 18% cotton jacquard face, suede reverse and cording. Made in the USA of USA and imported materials.

*New!*



XP219-53454  
Oxford  
Available 05/25



ZE493-53454  
Oxford  
Available 03/25



XP219-53754  
Wheat



ZE493-53754  
Wheat



ZE493-53555  
White Sands  
Unnapped



ZE493-53447  
Falcon Cove  
Unnapped



ZE493-53910  
Fossil Springs  
Unnapped



ZE475-53938  
Salt Creek  
Unnapped, Whipstitch Binding



ZE477-53936  
Sandhills  
Napped, Whipstitch Binding



ZE477-53869  
Kitt Peak  
Napped, Whipstitch Binding



ZE493-53556  
Star Watchers  
Unnapped



ZE493-53432  
San Miguel  
Unnapped



53912 Pilot Rock, Unnapped  
ZE493 Robe, ZD503 Shawl



53317 Silver Bark, Unnapped  
ZE435 Robe, ZD503 Shawl



53867 Juniper Mesa, Napped  
ZE494 Robe, ZD422 Shawl

ZE493, ZE435, ZE494 Robe  
68 x 80"  
—  
163 x 203cm  
\$279.00

Items left are available  
as a shawl  
ZD503, ZD422 Shawl  
68 x 68" + 4" fringe  
—  
173 x 173cm + 10cm  
\$289.00

See the Product Information Guide for additional blanket stories.



### BLANKET ROBE

Dry clean. 82% pure virgin wool, 18% cotton. Made in the USA. Felt bound, unless otherwise noted.

Robe 64 x 80" | 163 x 203cm | \$279.00



**ZE475-53937**  
Alta Lakes  
Unnapped, Whipstitch Binding



**ZE475-53856**  
Alamosa  
Unnapped, Whipstitch Binding



**ZE493-53939**  
Siskiyou  
Unnapped



**ZE475-53338**  
Fire Legend  
Unnapped, Whipstitch Binding



**BLANKET ROBE**

Dry clean. 82% pure virgin wool, 18% cotton. Made in the USA. Felt bound, unless otherwise noted.

Robe 64 x 80" | 163 x 203cm | \$279.00  
Pillow 18 x 18" | 46 x 46cm | \$ 99.50



A portion of all sales will support Oregon Parks and Recreation Department's efforts to encourage a more diverse group of park explorers by removing barriers and welcoming all to Oregon State Parks.

[See more of this collection on page 39.](#)



**ZK480-53940**  
Pacific Wonderland  
Napped



**XP223-53565**  
American West

**PILLOW** | Spot clean. Feather filled pillow insert. Zip closure. Face: 82% wool, 18% cotton, Reverse: cotton denim, suede cording. Made in the USA.



**ZE487-53565**  
American West  
Unnapped, Suede Binding



**ZE493-53650**  
Pagosa Springs  
Unnapped



**ZE493-53945**  
Bridge City  
Unnapped



**ZE477-52297**  
Crown of the Continent  
Napped, Whipstitch Binding



**ZE494-53415**  
Northern Lights  
Napped



**ZE493-52773**  
Journey West  
Unnapped



**ZE494-53269**  
Cedar Mountain  
Napped



**ZE435-52900**  
Pueblo Dwelling  
Unnapped



**ZE493-53434**  
Los Ojos  
Unnapped



**ZE493-53808**  
Crescent Bay  
Unnapped



**ZE494-53564**  
Big Medicine Oxford  
Napped



**ZE494-52417**  
Big Medicine Chive  
Napped



**ZE475-53855**  
Thunderbird Mountain  
Unnapped, Whipstitch Binding



**BLANKET ROBE**

Dry clean. 82% pure virgin wool, 18% cotton. Made in the USA. Felt bound, unless otherwise noted. Robe 64 x 80" | 163 x 203cm | \$279.00

**WILDLAND HEROES**

Mother Nature is on alert, and Wildland Firefighters stand ready to defend her. A portion of this blanket's sales help the Wildland Firefighter Foundation, to support families and injured firefighters in times of need. Napped.



ZE494-53721



ZE493-52218  
Brave Star  
Unnapped



ZE494-53566  
Sea Chief  
Napped

**WARRIORS' CIRCLE OF HONOR**

The National Native American Veterans Memorial, at Smithsonian's National Museum of the American Indian in Washington, DC, commemorates the service and sacrifice of Native American, Native Hawaiian, and Alaska Native Veterans—past, current, and future. Designed by Oklahoma Artist Harvey Pratt (Cheyenne & Arapaho), the memorial is a place of honor, recognition, reflection and healing for all Native veterans and their families.

In Mr. Pratt's "Warriors' Circle of Honor" blanket design (based on the memorial), the Sacred Fire burns at the center of bands of color representing Air, Fire, Water, and Earth. A border of stars and stripes has openings to allow spirits to enter. Four hands wearing feathers of bravery and triumph mark the cardinal directions. Oval shapes echo the museum's Grandfather Rocks. Napped.



See artist's biography on page 43



ZK480-53889



**Smithsonian**  
National Museum of the American Indian

Pendleton provides a portion of the product cost to the Smithsonian to support its educational mission.

**GRATEFUL NATION**

In recognition of their selfless sacrifice, our Grateful Nation jacquard blanket honors the brave men and women who have defended freedom throughout the history of the United States of America. Each authentically colored stripe represents a service ribbon awarded to veterans of historical conflicts in which our country has engaged. Napped.



A donation from the sale of each blanket will be made to the Fisher House™ Foundation, which provides residences near major military and VA medical centers for the families of ill or wounded service members and veterans.



ZE494-53828

**made in USA SERAPE**

While the serape is now part of both Spanish and Native American textiles, it has roots in the Mexican weaving tradition. Most commonly, the serape is woven of fine yarns that allow it to be lighter in weight than other blankets, with unbalanced stripes of varying widths. Pendleton's version stays true to this classic and historic style, and can serve a multitude of purposes.

Dry clean. 82% wool, 18% cotton. Made in the USA. Unnapped. Robe is felt bound. Shawl has 4" fringe | 10cm fringe.

ZD461, ZF611 Robe 64 x 79" | 163 x 201cm | \$249.00  
 ZD462, ZE611 Shawl 4" fringe 66 x 68" | 168 x 173cm | \$259.00



These archival Pendleton blankets were recreated for use in the film "Killers of the Flower Moon." Learn more about this extraordinary period of history in the upcoming Apple Original Film.

New!



**53067 Fairfax**  
(ZF611 Robe, ZE611 Shawl)  
Available 03/25

New!



**53069 Gray Horse**  
(ZF611 Robe, ZE611 Shawl)  
Available 03/25

New!



**53997 Ralston**  
(ZF611 Robe, ZE611 Shawl)  
Available 03/25



**ZD462 Shawl**



**53608 Grey**  
(ZD461 Robe, ZD462 Shawl)



**53757 Aegean**  
(ZD461 Robe, ZD462 Shawl)



**53750 Cherry**  
(ZD461 Robe, ZD462 Shawl)



**53947 Aqua**  
(ZD461 Robe, ZD462 Shawl)



**53614 Turquoise**  
(ZD461 Robe, ZD462 Shawl)



**53612 Oxford**  
(ZD461 Robe, ZD462 Shawl)



**53613 Scarlet**  
(ZD461 Robe, ZD462 Shawl)

**made in USA** **JACQUARD THROW**

Jacquard throws are just the right size for napping, reading or simply admiring. Toss one over a sofa or chair, or fold one at the foot of the guest bed. Woven in our Northwest mills.

Dry clean. 82% wool, 18% cotton. Made in the USA. Napped, felt binding.

ZF603 Throw  
54 x 64" | 137 x 163cm  
\$199.00

New!



ZF603-57005  
Smith Rock  
Available 05/25



ZF603-52908  
Spider Rock  
Available 05/25



ZF603-53555  
White Sands  
Available 05/25

**made in USA** **CONTEMPORARY THROW**

Pendleton's contemporary throw collection uses historical influences to create clean, modern patterns. Drawn from textile traditions around the world.

Dry clean. 82% wool, 18% cotton. Made in the USA. Napped, whipstitch binding.

ZF638 Throw  
54 x 64" | 137 x 163cm  
\$199.00

New!



ZF638-57011  
Agate Beach  
Available 03/25



ZF638-53936  
Sandhills



ZF638-53869  
Kitt Peak

**made in USA** **JACQUARD THROW & PILLOW**

**Throw:** Dry clean. 82% wool, 18% cotton. Made in the USA. Napped, felt binding.

**Pillow:** Feather filled pillow insert. Zip closure. Spot clean. 82% wool, 18% cotton jacquard face, suede reverse and cording. Made in the USA of USA and imported materials.

ZF617 Throw 64 x 64" | 163 x 163cm | \$229.00  
XP219 Pillow 18 x 18" | 46 x 46cm | \$ 99.50



XP219-53787  
Grey



XP219-53121  
Gold



ZF617-53787  
Prairie Rush Hour Grey



ZF617-53121  
Prairie Rush Hour Gold

**PRAIRIE RUSH HOUR**

The bison, often referred to as the buffalo, is the largest land mammal in North America. Long ago, millions of these mighty buffalo roamed the plains, prairies, and river valleys, terraforming the Great Plains with their hoofprints. Today, wild buffalo roam in and around America's National Parks, where they are protected.



## FRINGED JACQUARD THROW

*With intricate patterns and clear colors, these versatile throws are lightly fulled for a soft hand. Designs are inspired by classic Pendleton jacquards and the rich textile traditions of the American Southwest.*

**Throw:** Dry clean. 100% wool. Made in the USA.

**Pillow:** 100% wool jacquard face, suede reverse and cording. Made in the USA of USA and imported materials.

|              |                      |                    |          |
|--------------|----------------------|--------------------|----------|
| ZF646 Throw  | 60 x 62" + 4" fringe | 152 x 157cm + 10cm | \$199.00 |
| XP215 Pillow | 13 x 16"             | 33 x 41cm          | \$ 89.50 |



ZF646-53872  
Pinyon Stripe



ZF646-53871  
Sonora



ZF646-53870  
Sandhills



XP215-53784



XP215-53626



XP215-50694



ZF646-53784  
Chimayo Harvest



ZF646-53626  
Chimayo Garnet



ZF646-50694  
Chimayo Coral



## JACQUARD KNIT THROW

*Soft, warm and beautiful, these oversized jacquard knit throws bring vibrant Pendleton patterns to bedrooms and living rooms.*

**Throw:** Dry clean. 100% wool. Imported.

**Knit Pillow:** Zip closure. Feather fill. Dry clean. 100% wool. Imported.

|              |          |             |          |
|--------------|----------|-------------|----------|
| XF231 Throw  | 50 x 60" | 127 x 152cm | \$169.00 |
| XP231 Pillow | 20 x 20" | 51 x 51cm   | \$ 89.50 |



53949 Harding



53432 San Miguel



53856 Alamosa



**BEDDING COLLECTION**

*Offered in a full range of bedding sizes, Pendleton's made in the USA bedding collections offer blankets, shams, pillows and throws, bringing Pendleton beauty and quality to the bedroom.*

Dry clean. 82% wool, 18% cotton. Made in the USA. Napped, whipstitch binding.

|       |           |             |          |
|-------|-----------|-------------|----------|
| Throw | 54 x 64"  | 137 x 163cm | \$199.00 |
| Robe  | 64 x 80"  | 163 x 203cm | \$279.00 |
| Queen | 90 x 90"  | 229 x 229cm | \$439.00 |
| King  | 108 x 90" | 274 x 229cm | \$499.00 |
| Sham  | 20 x 26"  | 51 x 66cm   | \$139.00 |



**57011 Agate Beach**  
Bedding Available 03/25



**ZF638-57011**  
Throw  
Available 03/25

**New! AGATE BEACH**

Agate, a banded form of chalcedony, formed billions of years ago in volcanic pockets. In the cooler seasons of the year, storms and waves dislodge agates from gravel beds along the Oregon shoreline. Beachcombers and rock hounds search for stones that range in color from inky black, to vivid fire tones, to rare and valuable blues, to soft greys and misty pinks. In this pattern, striated stones emerge from a sandy background to glow softly under Oregon's gentle skies.

- ZF638-57011 Throw
- ZE477-57011 Robe
- ZD520-57011 Queen
- ZD521-57011 King



**53936 Sandhills**



**ZF638-53936**  
Throw

**SANDHILLS**

The Sandhills cover the Ogallala Aquifer, and its waters dot the low-lying areas with ponds and lakes. Millions of migrating birds pass through this National Natural Landmark while traveling the North American Central Flyway, including the majestic Sandhill Crane.

- ZF638-53936 Throw
- ZE477-53936 Robe
- ZD520-53936 Queen
- ZD521-53936 King



**53869 Kitt Peak**



**ZF638-53869**  
Throw

**KITT PEAK**

When night falls, Kitt Peak Observatory springs to life. Seven thousand feet above Arizona's saguaro forests, Kitt Peak's 24 telescopes are the largest gathering of astronomical instruments in the world.

- ZF638-53869 Throw
- ZE477-53869 Robe
- ZD520-53869 Queen
- ZD521-53869 King





## BEDDING COLLECTION

*Offered in a full range of bedding sizes, Pendleton's made in the USA bedding collections offer blankets, shams, pillows and throws, bringing Pendleton beauty and quality to the bedroom.*

Dry clean. 82% wool, 18% cotton. Made in the USA. Unnapped, suede binding. Robe is napped and felt bound unless otherwise noted.

|        |           |             |          |
|--------|-----------|-------------|----------|
| Robe   | 64 x 80"  | 163 x 203cm | \$279.00 |
| Queen  | 90 x 90"  | 229 x 229cm | \$439.00 |
| King   | 108 x 90" | 274 x 229cm | \$499.00 |
| Sham   | 20 x 26"  | 51 x 66cm   | \$139.00 |
| Pillow | 18 x 18"  | 46 x 46cm   | \$ 99.50 |

### New! LOST TRAIL

In September of 1805, the Lewis & Clark Corps of Discovery struggled to find a trail through the Bitterroot Mountains. Their travails gave name to Lost Trail Pass, crossing the Idaho/Montana border. Two peaked bands represent the Columbia River Basin drainages divided by Lost Trail: Bitterroot Clark-Fork to the north, and Salmon to the south. The middle band represents the Lost Trail National Wildlife Refuge, which provides crucial winter habitat to fish, fowl, and mammals large and small.

- ZE493-57000 Robe
- ZD517-57000 Queen
- ZD518-57000 King
- XP052-57000 Sham



ZE493-57000 Robe  
Available 03/25



57000 Lost Trail  
Bedding Available 05/25

### New! SMITH ROCK

The towering face of Smith Rock overlooks a bend in Oregon's Crooked River, challenging climbers from around the world to scale its heights. Considered by many to be the birthplace of American sport climbing, Smith Rock State Park offers several thousand climbs, many of them bolted, in its 650 acres of high peaks, deep river canyons, and hiking trails like Misery Ridge. This pattern, based on a traditional nine-element blanket, alternates the park's peaks with the many paths traveled by hikers and climbers.

- ZE493-53513 Robe
- ZD517-53513 Queen
- ZD518-53513 King
- XP052-53513 Sham



ZE493-53513 Robe  
Available 03/25



53513 Smith Rock  
Bedding Available 03/25

### WYETH TRAIL

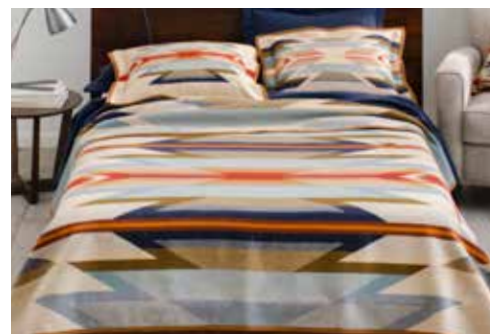
Pure strains of Native American crops are hard to come by. Seed Saver banks in Decorah, Iowa, and Tucson, Arizona, store precious seeds from long-ago plants. In the harmonious colors of ancient corn varieties, a balanced pattern of rows echoes the ancient gardens. Unnapped, suede binding.



XP219-53754  
Wheat



ZE493-53754 Robe



53754 Wyeth Trail Wheat

**PILLOW** | Spot clean. 82% wool, 18% cotton jacquard face, suede reverse and cording. Made in the USA of USA and imported materials.

- ZE493 Robe
- ZD517 Queen
- ZD518 King
- XP052 Sham
- XP219 Pillow




New! XP219-53454  
Oxford  
Available 05/25



New! ZE493-53754 Robe  
Available 03/25



New! 53454 Wyeth Trail Oxford  
Bedding Available 05/25

 Product that gives back!

**made in USA** **BEDDING COLLECTION**

Offered in a full range of bedding sizes, Pendleton's made in the USA bedding collections offer blankets, shams, pillows and throws, bringing Pendleton beauty and quality to the bedroom.

|   |        |           |  |             |  |          |
|---|--------|-----------|--|-------------|--|----------|
| Dry clean. 82% wool, 18% cotton.  | Robe   | 64 x 80"  |  | 163 x 203cm |  | \$279.00 |
| Made in the USA. Unnapped, suede binding. Robe is napped and felt bound unless otherwise noted. | Queen  | 90 x 90"  |  | 229 x 229cm |  | \$439.00 |
|   | King   | 108 x 90" |  | 274 x 229cm |  | \$499.00 |
|   | Sham   | 20 x 26"  |  | 51 x 66cm   |  | \$139.00 |
|   | Pillow | 18 x 18"  |  | 46 x 46cm   |  | \$ 99.50 |



53777 PS01

 **PRESERVATION SERIES: PS01**  
**EARLY NAVAJO (DINÉ) SARAPE,**  
**1800-1850**

This early weaving is contemporary with the Ute-style First Phase Chief blanket. This unusual early sarape combined the simple striped and terraced stepped design elements in use at the time without incorporating red bayeta yarns. The color scheme suggests a Rio Grande Valley influence. Based on an original weaving in The Durango Collection® (DCNC-43), Center of Southwest Studies Collection #2000:03007. Unnapped, whipstitch binding.

|             |       |
|-------------|-------|
| ZK960-53777 | Robe  |
| ZK473-53777 | Queen |
| ZK474-53777 | King  |
| XK470-53777 | Sham  |



53555 White Sands

**WHITE SANDS**

Shifting dunes of shining white crystal rise from the Tularosa Basin at New Mexico's White Sands National Monument, the world's largest gypsum dune field. At sunset, the sands glow with vibrant hues of twilight. Unnapped, suede binding. Robe is felt bound.

|             |       |
|-------------|-------|
| ZE493-53555 | Robe  |
| ZD517-53555 | Queen |
| ZD518-53555 | King  |
| XP052-53555 | Sham  |



53556 Star Watchers

**STAR WATCHERS**

The Pawnee people of the Central Plains honored the Pleiades Cluster, and believed the Pole Star was a chief who shone highest in the night sky. Villages were planned with astronomy in mind, dedicating one corner of each village to the Evening Star. Unnapped, suede binding. Robe is felt bound.

|             |       |
|-------------|-------|
| ZE493-53556 | Robe  |
| ZD517-53556 | Queen |
| ZD518-53556 | King  |
| XP052-53556 | Sham  |



53867 Juniper Mesa

**JUNIPER MESA**

Known for their twisting, mystical shapes and long life—some live over a thousand years—desert junipers produce aromatic berries used by Puebloans since ancient times as an herbal remedy. In this design, western junipers offer shade, sustenance and habitat to desert wildlife. Unnapped, suede binding. Robe is napped and felt bound.

|             |       |
|-------------|-------|
| ZE494-53867 | Robe  |
| ZD517-53867 | Queen |
| ZD518-53867 | King  |
| XP052-53867 | Sham  |



## BEDDING COLLECTION

*Offered in a full range of bedding sizes, Pendleton's made in the USA bedding collections offer blankets, shams, pillows and throws, bringing Pendleton beauty and quality to the bedroom.*

Dry clean. 82% wool, 18% cotton.  
Made in the USA. Unnapped, suede binding. Robe is napped and felt bound unless otherwise noted.

|        |           |             |          |
|--------|-----------|-------------|----------|
| Robe   | 64 x 80"  | 163 x 203cm | \$279.00 |
| Queen  | 90 x 90"  | 229 x 229cm | \$439.00 |
| King   | 108 x 90" | 274 x 229cm | \$499.00 |
| Sham   | 20 x 26"  | 51 x 66cm   | \$139.00 |
| Pillow | 18 x 18"  | 46 x 46cm   | \$ 99.50 |

### ALTA LAKES

Southwestern Colorado's Alta Lakes recreation area, home to hiking, fishing, boating and paddle boarding. The evening sky is lit by glowing bands of sunset colors that touch the peaks of the San Juan Mountains, surrounding the three glowing Alta Lakes. Unnapped, whipstitch binding.

- ZE475-53937 Robe
- ZD522-53937 Queen
- ZD523-53937 King
- XP051-53937 Sham



53937 Alta Lakes

### SAN MIGUEL

A pattern inspired by mid-to-late 19th Century Native American weaving traditions and the influence of Spanish missionaries in the Southwest. The reversible jacquard has two different looks, grey on one side, ivory on the other. Unnapped, suede binding. Robe is felt bound.

- ZE493-53432 Robe
- ZD517-53432 Queen
- ZD518-53432 King
- XP040-53432 Sham



53432 San Miguel

### HARDING

In 1923, President Harding and his wife, Florence, visited the West to dedicate a portion of the Old Oregon Trail, where local Cayuse and Umatilla chiefs presented the First Lady with this shawl inspired by the Chief Joseph blanket. Unnapped, suede binding. Robe is napped and felt bound.

- ZD421-53361 Robe
- ZD517-53361 Queen
- ZD518-53361 King
- XP040-53361 Sham



53361 Harding

### LOS OJOS

Spanish crosses, diamond "eyes" (ojos) and symbols of the Navajo Four Mountains of Creation reverse to a white background. Unnapped, suede binding. Robe is felt bound.

- ZE493-53434 Robe
- ZD517-53434 Queen
- ZD518-53434 King
- XP040-53434 Sham



53434 Los Ojos

**New! QUILTS**

Pieced quilt sets in Pendleton patterns and stripes come to the bedroom in soft, breathable cotton for year-round beauty and comfort. Available only in USA.

Machine Wash. 100% cotton, pieced quilted with cotton fill, solid reverse. Imported.

|       |                         |           |  |             |  |          |
|-------|-------------------------|-----------|--|-------------|--|----------|
| XA401 | Twin +1 standard sham   | 68 x 86"  |  | 173 x 218cm |  | \$229.00 |
| XA402 | Queen +2 standard shams | 90 x 92"  |  | 229 x 234cm |  | \$309.00 |
| XA403 | King +2 king shams      | 110 x 96" |  | 279 x 244cm |  | \$349.00 |



**55328 Glacier Stripe**  
Available 07/25



**55330 Wyeth Trail**  
Available 07/25



**55329 Yellowstone Stripe**  
Available 07/25



**55331 Lace River**  
Available 07/25

**MATELASSE COTTON BEDDING**

Soft organic cotton coverlets made for Pendleton in Portugal. High-end quality ensures years of comfort and durability. Inspired by antique hand-loomed cotton coverlets of American Appalachia found in museums and private collections. OEKO-TEX® Standard 100 certified.

Machine washable, tumble dry low. 100% organic cotton. Made in Portugal.

|       |       |           |  |             |  |          |
|-------|-------|-----------|--|-------------|--|----------|
| XA326 | Twin  | 66 x 90"  |  | 168 x 229cm |  | \$149.00 |
| XA327 | Queen | 90 x 90"  |  | 229 x 229cm |  | \$179.00 |
| XA328 | King  | 108 x 90" |  | 275 x 229cm |  | \$199.00 |
| XP329 | Sham  | 20 x 26"  |  | 51 x 66cm   |  | \$ 49.50 |



**New! COVERLETS**

Quilted cotton coverlet sets in exclusive printed Pendleton patterns bring softness, beauty and comfort to every bedroom. Available only in USA.

Machine Wash. 100% cotton, printed with cotton fill, solid reverse. Imported.

|       |                         |           |             |          |
|-------|-------------------------|-----------|-------------|----------|
| XA411 | Twin +1 standard sham   | 68 x 86"  | 173 x 218cm | \$189.00 |
| XA412 | Queen +2 standard shams | 90 x 92"  | 229 x 234cm | \$259.00 |
| XA413 | King +2 king shams      | 110 x 96" | 279 x 244cm | \$289.00 |



55332 Siskiyou  
Available 07/25



55335 White Sands  
Available 07/25



55333 Harding Navy  
Available 07/25



55334 Harding Denim  
Available 07/25



55220 Echo Bluff




55219 Midnight Nova



55189 Chief Joseph



55190 Ganado

 Product that gives back!

**made in USA**

**CHILDREN'S BLANKET**

*Warm and cozy, this blanket will travel from the crib to wherever the little one goes. Made of our softest wool. A treasured baby gift when customized with embroidery.*

Dry clean. 82% wool, 18% cotton. Made in the USA. Napped, felt bound unless otherwise noted.

32 x 44" | 81 x 112cm | \$ 99.50

**New! TIDE SCHOOL**

Oceans teem with creatures swimming, finding food, facing danger, and staying safe. Are they hatched or born knowing everything they need to know? It might seem so, but citizens of the seas are always learning lessons in tide school, like how to take care of each other, how to communicate, how to lead, and how to follow.



ZM609-57007  
Tide School  
Available 03/25

**New! \$ 7 GENERATIONS**

"7 Generations" illustrates the past, present and future of the Navajo Nation. The central N7 motif represents the impact of each person on generations before and after. Suede binding.

\*ONLY AVAILABLE IN NORTH AMERICA

\$129.00

See artist's biography on page 42



ZE786-53804  
7 Generations  
Available 03/25



ZM608-53564  
Big Medicine



ZM608-53567  
Sunrise Eagle



ZM608-53568  
Shared Paths



ZD608-53121  
Prairie Rush Hour



ZM608-53416  
Star Guardian



ZM608-53875  
Moon Dance




ZM608-53434  
Los Ojos



ZM609-53436  
Woodland Neighbors  
Whipstitch Binding



ZM609-53874  
Wind Riders  
Whipstitch Binding

 Product that gives back!

**made in  
USA**

**CHIEF JOSEPH CHILDREN'S BLANKET**

*Warm and cozy, this blanket will travel from the crib to wherever the little one goes. Made of our softest wool. A treasured baby gift when customized with embroidery.*

Dry clean. 82% pure virgin wool, 18% cotton. Made in the USA. Napped, felt bound.

|                                |                       |               |
|--------------------------------|-----------------------|---------------|
| ZD632 Children's blanket       | 32 x 44"   81 x 112cm | \$ 99.50      |
| ZD633 Fringed Children's Shawl | 32 x 44"   81 x 112cm | \$109.00      |
|                                | + 4" fringe           | + 10cm fringe |



51106 Ivory



51114 Khaki



51128 Aqua



53803 Slate



51108 Grey



51124 Turquoise



51103 Purple




51130 Indigo




51163 Pink



51127 Cherry

 A portion of the proceeds supports women's health through N.A.R.A. (Native American Rehabilitation Association).

 Product that gives back!



*Tested for harmful substances and produced sustainably in accordance with OEKO-TEX® guidelines. This purchase is a smart choice. It shows your support for a more sustainable environment and your interest in a better tomorrow.*

### ORGANIC COTTON BABY BLANKET

*Snuggle your new arrival with this luxurious organic cotton that mirrors the superb quality of Pendleton wool blankets, loomed exclusively for us in Germany. Oeko-Text® Standard 100 certified.*



For more info visit [pwmwhsl.com](http://pwmwhsl.com)

100% organic cotton. Machine washable. Made in Germany. Whipstitch hem.

30 x 40" | 76 x 102cm | \$49.50



 XM607-50738  
Crater Lake



 XM607-50717  
Glacier  
*Not available in Canada.*



### COTTON WOVEN BABY BLANKETS

*Soft and airy, these lightweight crib-sized cotton blankets are made exclusively for Pendleton in Portugal. Swaddle and cradle your baby with superb quality, in patterns inspired by the antique hand-loomed cotton coverlets of American Appalachia. Oeko-Text® Standard 100 certified.*



Machine washable, 100% organic cotton. Made in Portugal.

30 x 40" | 76 x 102cm | \$49.50



XM610-55175  
Falcon Cove Coral

XM610-55193  
Falcon Cove Slate

*New!*



XM610-55325  
Smith Rock Ocean  
Available 03/25

*New!*



XM610-55327  
Smith Rock Clay  
Available 03/25



XM610-55175  
Falcon Cove Coral



XM610-55193  
Falcon Cove Slate



**SHERPA STROLLER BLANKET**

*It's time to bundle up and see the world, safely wrapped in a soft cotton knit backed with cuddly Sherpa fleece. Perfect for the stroller, crib or carseat. Oeko-Tex® Standard 100 certified.*

Machine washable. 100% cotton, backed with 100% polyester. Imported.

30 x 40" | 76 x 102cm | \$ 69.50

New!



XM609-57000  
Lost Trail  
Available 03/25

New!



XM609-55326  
Pilot Rock  
Available 03/25



XM609-53317  
Silver Bark

**KNIT BABY BLANKET**

*Cuddle your new arrival with this soft, washable cotton knit blanket, with matching knitted cotton cap to top your favorite little head. Oeko-Tex® Standard 100 certified.*



Machine washable, 100% organic cotton. Imported. Cap fits 6-12 months.

30 x 40" | 76 x 102cm | \$ 69.50



XM611-55198  
Sheep Dreams



XM611-55197  
Harding



XM611-53447  
Falcon Cove



XM611-53606  
Canyonlands

**New product offering! CHILDREN'S 5 PIECE MELAMINE DISH SET**

*Colorful Pendleton designs for your little ones in quality melamine that's break/shatter resistant and BPA free. Ages 18+ Months.*

Dishwasher safe, do not microwave. Imported.  
12 oz | 355 ml. | \$ 39.50



XW758-55320  
Woodland Neighbors  
Available 03/25



XW758-55073  
Smith Rock  
Available 03/25





Tested for harmful substances and produced sustainably in accordance with OEKO-TEX® guidelines. This purchase is made with materials tested for harmful substances, made in environmentally friendly facilities and made in safe and socially responsible workplaces. Learn more at [madeingreen.com](http://madeingreen.com)

### PRINTED HOODED BABY TOWEL

A soft, cozy hug for after bath time. Dry and cuddle baby in a favorite blanket pattern. Oeko-Tex® Made in Green certified.

Machine wash. 100% cotton exclusive of embroidery. Imported. 480 GSM

23 x 48" + hood | 58 x 122cm | \$39.50

New!



XB263-55197 Harding  
Available 01/25



XB263-53874 Wind Riders



XB263-53622 Shared Spirits



XB263-55059 Los Ojos



XB263-53436 Woodland Neighbors



XB263-53568 Shared Paths

### HOODED TOWEL

Keep head and shoulders dry and warm after a swim, bath or jump in the lake. Woven in an iconic Pendleton design, these towels are both stylish and functional. Now in a new Tween size! Oeko-Tex® Made in Green certified.

Machine washable. 100% cotton velour with a cotton terry reverse. Imported. 480 GSM.

Children XB243, Fits ages 4 - 7  
24 x 24" + hood | 60 x 60cm | \$49.50

Tween XB253, Fits ages 8 - 14  
30 x 34" + hood | 76 x 86cm | \$69.50

Adult XB248  
40 x 45" + hood | 102 x 114cm | \$99.50



New!

New!



53912 (C, T, A)  
Pilot Rock  
Available 03/25



53555 (C, T, A)  
White Sands  
Available 03/25



55214 (C, T, A)  
Harding




53606 (C, A),  
55311 (T)  
Canyonlands



51163 (C),  
55309 (T)  
Chief Joseph Pink



51128 (C),  
55310 (T)  
Chief Joseph Aqua

 Product that gives back!

**OEKO-TEX®**  
CONFIDENCE IN TEXTILES  
**MADE IN GREEN** 

Tested for harmful substances and produced sustainably in accordance with OEKO-TEX® guidelines. This purchase is made with materials tested for harmful substances, made in environmentally friendly facilities and made in safe and socially responsible workplaces. Learn more at [madeingreen.com](http://madeingreen.com)

### TOWEL FOR TWO

Share this towel with a friend. The Towel for Two is sheared on one side for luxurious softness, looped on the other for superior absorption. Oeko-Tex® Made in Green certified.

Machine wash. 100% cotton.  
Imported. 526 GSM  
62 x 70" | 157 x 178cm  
\$89.50

Includes an adjustable nylon carrying strap.



**XB242-53912**  
Pilot Rock

**XB242-51128**  
Chief Joseph Aqua

**XB242-55097**  
Fire Legend

### TOWEL SETS

The full spectrum of Pendleton color in all the traditional towel set sizes: bath, hand and wash. These patterns coordinate our oversized jacquard towels for those who prefer a bath sheet. Must be ordered in multiples of three. Oeko-Tex® Made in Green certified.

Machine wash. 100% cotton. Imported. 530 GSM.

#### Jacquard Towels

|       |      |          |  |            |  |          |
|-------|------|----------|--|------------|--|----------|
| XB218 | Bath | 30 x 58" |  | 76 x 147cm |  | \$ 39.50 |
| XB219 | Hand | 18 x 30" |  | 46 x 76cm  |  | \$ 19.50 |
| XB220 | Wash | 13 x 13" |  | 33 x 33cm  |  | \$ 9.50  |

#### Dobby Towels

|       |      |          |  |            |  |          |
|-------|------|----------|--|------------|--|----------|
| XB210 | Bath | 30 x 58" |  | 76 x 147cm |  | \$ 39.50 |
| XB211 | Hand | 18 x 30" |  | 46 x 76cm  |  | \$ 19.50 |
| XB212 | Wash | 13 x 13" |  | 33 x 33cm  |  | \$ 9.50  |

New!



 **50717**  
Glacier

Not available in Canada.

New!



 **50738**  
Crater Lake

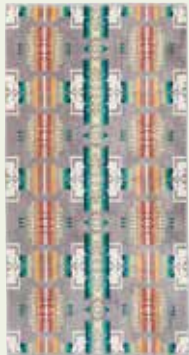
New!



**54746**  
Journey West  
Available 01/25



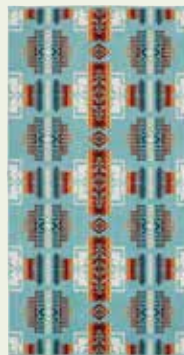
**53555**  
White Sands



**51108**  
Chief Joseph Grey



**52908**  
Spider Rock




**51128**  
Chief Joseph Aqua



**53606**  
Canyonlands



 Product that gives back!

## OVERSIZED JACQUARD TOWEL

Dynamic blanket patterns in super-sized towels for beach, poolside or hot tub. Thirsty cotton velour, sheared on one side for luxurious softness, looped on the other for superior absorption. Oeko-Tex® Made in Green certified.

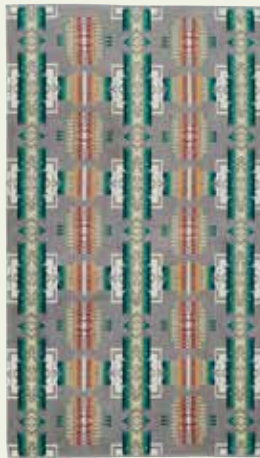
Machine washable. 100% cotton. Imported. 530 GSM.  
40 x 70" | 102 x 178cm | \$ 59.50



XB233-55184  
Chief Joseph Rosewood



XB233-53803  
Chief Joseph Slate



XB233-51108  
Chief Joseph Grey



XB233-51128  
Chief Joseph Aqua



XB233-51114  
Chief Joseph Khaki



XB233-55214  
Harding Black



XB233-55165  
Harding Grey



XB233-55167  
Harding Slate



XB233-53361  
Harding

New!



XB233-53942  
Rock Point  
Available 01/25

New!



XB233-53978  
Los Lunas  
Available 01/25

New!



\$ XK233-53721  
Wildland Heroes  
Available 01/25

New!



XB233-53939  
Siskiyou  
Available 01/25



XB233-54663  
Falcon Cove



XB233-53555  
White Sands



XB233-53606  
Canyonlands



XB233-16013  
Sierra Ridge



XB233-54746  
Journey West



XB233-54769  
Pilot Rock

New!



\$ XB249-50717  
Glacier

New!



\$ XB249-50738  
Crater Lake



XB233-53508  
Tucson



XB233-52908  
Spider Rock



XB233-55059  
Los Ojos

Product that gives back!

### CERAMIC MUG

18 oz. (532 ml.) Dishwasher and Microwave safe. Ceramic. Gift-boxed. Imported. Sold in multiples of four.

XC871, XC882, XK871 | \$19.50

**New!**



XC871-57012  
Cedar Canyon  
Available 03/25

**New!**



XK871-53160  
Gather  
Available 01/25

**New!**



XK871-53721  
Wildland Heroes



XC871-53787  
Prairie Rush Hour



XC871-53452  
In Their Element



XC871-53873  
Buffalo Nation



XC871-53565  
American West



XC871-53564  
Big Medicine



XC871-53779  
Rodeo Sisters



XC871-53317  
Silver Bark



XC871-53538  
Tucson



XC871-53274  
Eagle Gift



XC871-53949  
Harding Navy



XC871-55059  
Los Ojos



XC871-52242  
Shared Spirits



XC871-53606  
Canyonlands

Product that gives back!

**New Color!**



XC882-53704  
Yellowstone  
Available 03/25



XC882-50717  
Glacier



XC882-53569  
Olympic



XC882-52054  
Yosemite



XC882-50738  
Crater Lake



XC882-50750  
Grand Canyon



XC882-53853  
Zion

### MUG SET COLLECTIONS

Lift a cup to the sunrise, or sip coffee under the stars with stripes inspired by Pendleton blankets. Sold in a boxed set of four.

Dishwasher and Microwave safe. Ceramic. Imported. 12 oz | 355 ml. \$ 59.50



**New!** XC880-57008  
High Desert  
Available 03/25



**New!** XC880-57009  
Smith Rock  
Available 03/25



XC880-55182  
Chief Joseph



XC880-55222  
Camp Stripe


### AMERICAN INDIAN COLLEGE FUND COLLECTION

Enjoy beverages in a handy new size of our beloved ceramic mugs, sold in a set of four patterns drawn from American Indian College Fund blanket designs. A portion of the proceeds will help provide scholarships for students attending tribal colleges. Sold in a boxed set of four.

Dishwasher and Microwave safe. Ceramic. Imported. 12 oz | 355 ml. \$ 69.50



XC873-55221

 Product that gives back!

**PENDLETON® STAINLESS STEEL DRINKWARE**

Pendleton has partnered with Klean Kanteen®, maker of bottles that last a lifetime, and offer a safe alternative to plastic or lined aluminum. BPA-free metal containers are made from high quality 18/8 grade stainless steel. Klean Kanteen® proudly donates at least 1% of all sales to non-profit environmental causes. Size fits in many cup holders and bike cages. Safe, toxin-free, and doesn't retain or impart flavors.



Hand wash. Imported. Sold in multiples of six by style/color.



XC874-55083  
Harding

New!  




XK870-53940  
Pacific Wonderland

New!



XC963-53939  
Siskiyou  
Available 01/25

New!



XC963-55059  
Los Ojos  
Available 01/25



XC963-55083  
Harding

New Kids' Style!



XC964-53568  
Shared Paths  
Available 01/25



XC964-55227  
Shared Spirits  
Available 01/25

**STAINLESS STEEL WATER BOTTLE**

27 oz | 798 ml | \$ 39.50

**CAFE CAP INSULATED TUMBLER**

16 oz | 473 ml | \$ 49.50

**TWIST CAP INSULATED TUMBLER**

12 oz | 354 ml | \$ 44.50

New!



XW844-53956  
Oxford  
Available 01/25



XW844-55207  
Nightfall



XW844-55157  
Hammertone Green

**STANLEY X  
PENDLETON®**

Two new pieces continue the collaboration with Stanley. Features stripes from Pendleton's Yakima Camp Blanket, an outdoor favorite. Lids disassemble for deep cleaning.

New!



XW842-53956  
Oxford  
Available 01/25



XW842-55207  
Nightfall



XW842-55157  
Hammertone Green

**CLASSIC INSULATED VACUUM FLASK**

Hand wash recommended. Imported. 32 oz | 1.0qt  
Sold in multiples of four per style. \$59.50

**CLASSIC TRIGGER-ACTION TRAVEL MUG**

Hand wash recommended. Imported. 16 oz. | 473 ml  
Sold in multiples of four per style. \$39.50

New product offering!

**INSULATED 34OZ. BOTTLE**

Insulated water bottles that are easy to carry, easy to clean, in the Pendleton patterns you love most. Take Pendleton along on all your adventures and keep disposable bottles out of our landfills. Exclusive Pendleton patterns, quality materials, and superior insulation.

Hand wash recommended. Imported. Sold in multiples of four per style.

34 oz | 1.06qt | \$ 49.50



XC965-53949  
Harding  
Available 03/25



XC965-53606  
Canyonlands  
Available 03/25



XC965-53912  
Pilot Rock  
Available 03/25

DRINKWARE

**New! STONEWARE DISH SETS**

High quality dishware in patterns that say Pendleton: Harding motif or assorted traditional tartans.

Dishwasher and Microwave safe. Ceramic. Gift-boxed. Imported. Sold in a set of 4 plates or 4 bowls.

|                            |               |          |
|----------------------------|---------------|----------|
| XW712 Plate, set of 4      | 8"   20cm     | \$ 59.50 |
| XW711 Snack bowl, set of 4 | 4"   10cm     | \$ 59.50 |
| XC710 Mugs, set of 4       | 12 oz   355ml | \$ 59.50 |

**HARDING COLLECTION**



XC710-53966

XW711-53966



XW712-53966

**TARTAN COLLECTION**



XC710-53967

XW711-53967



XW712-53967

**PENDLETON CAMP ENAMELWARE**

*in partnership with Crow Canyon*

Take to the hills, the camper or just the patio with a boxed six-piece set. Includes two mugs, two dinner plates, and two bowls.

Food-safe, heat resistant, durable. Dishwasher safe, enameled metal, imported.

|                     |                   |                    |
|---------------------|-------------------|--------------------|
| Plates 10"   27 cm, | Bowls 6"   15 cm, | Mugs 12oz   355 ml |
| \$ 69.50            |                   |                    |



XW713-55223  
Camp Cross



XW713-55152  
Camp Ivory

**BIRCHWOOD JACQUARD TRAY SET**

Perfect for gifting and entertaining. Handmade on Sweden's Isle of Oland, certified to be environmentally friendly in construction, materials and sustainability. Set of two includes one each of Chief Joseph and Canyonlands pattern.

Food-safe, dishwasher safe, lightweight, stain-proof and heat resistant. Washable, Scandinavian white birch, organic melamine and paper, imported from Sweden.

|                               |          |
|-------------------------------|----------|
| Small 10.5 x 8"   27 x 20cm   | \$ 49.50 |
| Large 14.25 x 11"   36 x 28cm |          |



XW719-55158



**New! JACQUARD-WOVEN TABLE LINENS**

High quality pure cotton table linens in two new patterns inspired by some of our most popular blankets. Mats are backed with cotton canvas for durability.

Machine washable, 100% cotton, imported.

|       |                      |          |  |           |  |          |
|-------|----------------------|----------|--|-----------|--|----------|
| XW802 | Placemats, set of 4  | 19 x 14" |  | 48 x 35cm |  | \$ 39.50 |
| XW803 | Tea Towels, set of 2 | 20 x 28" |  | 51 x 71cm |  | \$ 29.50 |
| XW805 | Napkins, set of 4    | 20 x 20" |  | 15 x 51cm |  | \$ 34.50 |



**53803 Chief Joseph**  
Available 03/25



**53936 Sandhills**  
Available 03/25



**FABRIC BY THE YARD**

Dry clean. 82% pure virgin wool, 18% cotton. Blanket weight. Made in USA.

64" wide | 163cm | \$124.00 per yard (3 yard minimum)

**FABRIC AND BLANKET SALES POLICY**

Pendleton Woolen Mills' fabric and blankets bear exclusive copyrighted designs. These designs are protected by federal copyright registrations and cannot be used in interstate commerce without Pendleton Woolen Mills' express permission.

**ORDERING FABRIC**

- There is a three-yard minimum on each fabric.
- We regret that cut yardage cannot be returned.
- In-stock fabrics will arrive in two weeks.

*New!*

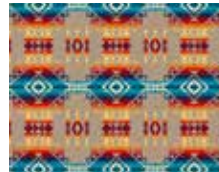


**YA152-57030**  
**Mission Trails Navy**  
15" repeat

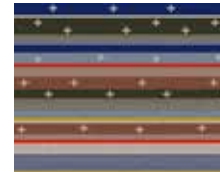
*New!*



**YA152-53513**  
**Smith Rock**  
22" repeat



**YA152-16035**  
**Pilot Rock**  
16" repeat



**YA152-54679**  
**Scout Stripe**  
17" repeat



**YA152-53538**  
**Tucson Aqua**  
13.5" repeat



**YA152-53876**  
**Rancho Arroyo Shale**  
17" repeat



**YA152-56006**  
**Rancho Arroyo Black**  
17" repeat



**YA152-53616**  
**Over-All Black**  
26" repeat



**YA152-53432**  
**San Miguel Grey**  
17" repeat

**SWATCH SETS**

All the fabrics available to PWM accounts in a swatch set that allows customers to touch the fabric and visualize how colors can complement decor. The nominal charge for a swatch set will be refunded when you place your first fabric order.

YS001-50801 \$ 36.00 per set

**STILL CHASING RAINBOWS**

by Barry Friedman

A beautifully photographed book that documents the historical and artistic significance of Native American trade blankets in the entertaining words of renowned blanket collector Barry Friedman.

XZ916-55056 \$ 79.50



**FEATURED ARTISTS**

Each year, Pendleton is proud to work with some of the finest artists to bring you new, inspired designs. Each artist brings their experience and point of view to the design, which is then woven on the Jacquard looms in our Pendleton, Oregon, mill. These gifted artists expand the tradition which began when the first blankets rolled off the looms in 1909.



**New! EMMA ROBBINS**

**Gather**

Emma Robbins (Diné) is an artist, community organizer, and Executive Director of the Navajo Water Project, part of the human rights nonprofit DigDeep Water. She completed her BFA at the School of the Art Institute of Chicago and studied Modern and Contemporary Latin American Art History in Buenos Aires, Argentina. She is also an Aspen Institute Healthy Communities Fellow. Through her artwork, Robbins strives to raise awareness of Native issues through art that uses found materials gathered on her trips across the United States and abroad.



**New! CHELYSA OWENS-CYR**

**American Indian College Fund - Unity**

Chelysa Owens-Cyr (Fort Peck Assiniboine & Dakota Sioux/Pasqua First Nations Cree) is an artist from Montana's Fort Peck Indian Reservation. As a College Fund scholar, she studies Business Administration at Fort Peck Community College. She is a self-taught contemporary ledger artist, beader, graphic designer and painter, influenced by her family and culture. "I work with many mediums to share my personal teachings, beliefs, stories and visions with the people."



**DESHAWNA ANDERSON**

**American Indian College Fund - Courage to Bloom**

Photo by: Justin Stewart

Deshawna Anderson (White Mountain Apache/Crow) attends Little Big Horn College in Crow Agency, Montana, where she studies Business Administration. She is of the Butterfly Clan and is a child of the Greasy Mouth. As a visual learner, she became interested in art as a tool to educate the viewer on the perspective of its creator. Influenced by Apache and Crow culture from the Crazy Mountains to Salt River Canyon, she also draws inspiration from historic and contemporary burden baskets, beadwork, quillwork, and attire.



**TRACIE JACKSON**

**American Indian College Fund - Nike N7 - 7 Generations**

Tracie Jackson is a Diné artist and designer from Star Mountain in the Navajo Nation. She is a fourth generation artisan. Her family encouraged her to study the traditional art forms of her tribe, and with their support she became a painter, jeweler, beader, and graphic designer. She studied design at the University of Oregon and currently works in Portland, Oregon, designing for the Nike N7 program, her dream job since age 14. "I was taught to get an education and use it to help our Native community, which pushed me to become a designer for N7."



**PRESTON SINGLETARY**

**American Indian College Fund - Raven and the Box of Knowledge**

Preston Singletary is an internationally known glass artist who grew up in the Pacific Northwest. His great-grandparents were full-blooded Tlingit Indians. His works explore traditional images and legends of his Tlingit heritage, translated into glass. His artworks are included in museum collections from the National Museum of the American Indian in Washington, DC to the Handelsbanken in Stockholm, Sweden.



**New! RAMONA SAKIESTEWA**

**Legendary Collection - Cedar Canyon**

Ramona Sakiestewa (Hopi) is an internationally renowned artist and designer who grew up in the American Southwest. Her portfolio includes fine art tapestries, works on paper, and architectural design. Her works reside in public, private, corporate and museum collections in the United States and abroad, with numerous awards including the New Mexico Governor's Award for Excellence in the Arts. "As artists, we have to be prepared to reinvent ourselves many times."

**COMMUNITY AND CONNECTION**

Pendleton is part of a connected community that only grows stronger through education, preservation, wellness, and care for America's heroes. We are proud to give back through donations, contributions and philanthropic partnerships.



**National Park Foundation**  
Preserving America's Treasures



**OREGON STATE PARKS**  
Supporting the Park Explorer Series.



**SMITHSONIAN**  
Supporting Education



**AMERICAN INDIAN COLLEGE FUND**  
Supporting Education



**CENTER OF SOUTHWEST STUDIES**  
Preserving Native American Arts and Funding Native American Art Education

Notice: Pendleton Woolen Mills complies with the Indian Arts and Crafts Act | The Indian Arts and Crafts Act of 1990 (P.L. 101-644), as amended, is a truth-in-marketing law that prohibits the offer or display for sale, or sale, of any art or craft product in a manner that falsely suggests it is Indian produced, an Indian product, or the product of a particular Indian Tribe. Covering all traditional and contemporary American Indian and Indian-style art and craftwork produced after 1935, the Act carries both criminal and civil penalties. For more information on the Act, please visit <https://www.doi.gov/iacb>



**SUSANA SANTOS**  
**Legendary Collection - Rodeo Sisters**

Apolonia Susana Santos (1954-2006) was a painter, serigrapher, sculptor, writer and activist of Tygh and Yakama ancestry. Her use of rich colors, textures and natural materials created dynamic landscapes with a deep narrative that illuminates historic and contemporary Indigenous life and memory. Susana's artistic prowess and fearless activism were inextricable. She brought a unique, authentic vision to everything she created. Through her writings, public speaking, theater-style marches and art shows, Susana encouraged Native youth and children to always "Remember Who You Are."



**HARVEY PRATT**  
**Warriors' Circle of Honor**

Harvey Pratt (Cheyenne/Arapaho) is an Oklahoma artist who works in painting, sculpting, wood carving, bronze, and graphic design. He served with the 3rd Reconnaissance Battalion in Vietnam. He has worked in law enforcement for fifty years and is one of the foremost forensic artists in America. He currently serves as the chairperson of the Interior Indian Arts and Crafts Board, and as a traditional Southern Cheyenne Peace Chief. For more information on his work, please visit [harveypratt.com](http://harveypratt.com).



**JOE TOLEDO**  
**Legendary Collection - In their Element**

Joe Toledo is a native of Jemez Pueblo in New Mexico who currently lives in Tiffany, Colorado. He enjoys working in watercolor because it is "spontaneous and unpredictable." Mr. Toledo mixes soft rainwater with his colors to reflect images from his Jemez Pueblo culture. His works are exhibited in collections in the United States, Canada and Europe.



**JUDD THOMPSON**  
**Artist Collection - A Horse Called Paint**

Judd Thompson was born in 1983 and grew up surrounded by art in his family's business, The Custer Battlefield Trading Post. After graduating from the University of Wyoming with a degree in Art & Art History, he moved to Billings, Montana, where he uses his passion for color theory to capture the essence of Crow Country in a variety of media, including painting and sculpture.



**JIM YELLOWHAWK**  
**Legendary Collection - Buffalo Nation**

Jim Yellowhawk grew up on the Cheyenne River Reservation in South Dakota. He is an enrolled member of the Itazipco Band of the Cheyenne River Sioux Tribe, with Onodoga/Iroquois heritage through his mother. He graduated from Marion College, Indiana, and also studied at Columbus, Ohio School of Art and Design. He divides his time between the Black Hills of South Dakota and Golden Bay, New Zealand. His work encompasses many different media, including dance. "Traditional spirituality is woven into my daily life, work, practices and way of being."



**New! LOGAN MAXWELL HAGEGE**  
**Artist Collection - Resting Place**

Logan Maxwell Hagege is a Los Angeles based contemporary artist whose modern visions of the American West use signature clouds and repeating shapes to echo flora and figures in the foreground, creating a visual narrative for each composition. His use of natural light and color distills shapes to their essence, while celebrating their complexity.



**NATIVE AMERICAN REHABILITATION ASSOCIATION**  
Culturally Informed Health Care for Native Women



**FISHER HOUSE FOUNDATION**  
Helping Military Personnel and their Families



**DIG DEEP**  
Supporting DigDeep's Navajo Water Project



**WILDLAND FIREFIGHTER FOUNDATION**  
Supporting Firefighters in Times of Need

## NATIONAL SALES MANAGERS

### APPAREL

Steve Ludeman  
ph 503.535.5522  
steve.ludeman@penwool.com

### HOME & ACCESSORIES

Chris Callahan  
ph 503.535.5890  
chris.callahan@penwool.com

---

Pendleton Woolen Mills  
PO Box 3030  
Portland, OR 97208-3030  
503.226.4801, Fax 503.535.5502  
Reorders 800.522.WOOL (9665)

### PWMWHS.COM

Pendleton's wholesale site has current price lists, product information guides, point-of-sale images and more.

  @PENDLETONWOOLENMILLS

   @PENDLETONWM

## UNITED STATES ACCOUNT MANAGER TERRITORIES

### NORTHWEST REGION

WOMEN'S, HOME & ACCESSORIES  
Mary Anne Suzick, c 206.850.4192  
maryanne.suzick@penwool.com

### NORTHWEST REGION

MEN'S & ACCESSORIES  
Allison Bowes, c 503.928.1069  
sales@thedeliverygroup.com

### NORTHERN CALIFORNIA

ALL DIVISIONS  
Heidi Oneto, c 209.602.0596  
honeto.sales@gmail.com

### SOUTHERN CALIFORNIA

ALL DIVISIONS  
Casey Fleming, ph 714.803.7873  
ksea.sales@gmail.com

### ROCKY MOUNTAIN REGION

ALL DIVISIONS  
Jeanette Palmer, c 310.729.2083  
fx 949.419.2295  
jeanettepalmer.pendleton@gmail.com

### UPPER MIDWEST REGION

ALL DIVISIONS  
Steve Schroeder, c 952.212.7447  
ssdarth44@gmail.com

### CENTRAL REGION

MEN'S, HOME & ACCESSORIES  
Lynn Fisher, ph 913.481.8587  
lynn.fisher@penwool.com

### CENTRAL REGION

WOMEN'S & ACCESSORIES  
Jack Hunton c 214.533.4807  
ph 214.688.1551 fx 214.749.0322  
jack@huntonandcompany.com

### MIDWEST REGION

ALL DIVISIONS  
Bill Linsmayer, ph 269.921.5229  
bill@scoutsalesco.com

### SOUTHEAST REGION

ALL DIVISIONS  
Michael Novak, ph 410.804.3118  
mnovak1170@hotmail.com

### NORTHEASTERN REGION

ALL DIVISIONS  
Geoff Manning, ph 401.635.2391  
geoff@manningoutdoor.com

### NEW YORK CITY *Showroom by appointment only:*

Geoff Manning, ph 401.635.2391  
214 W. 39th Street #1007  
New York, New York 10018  
geoff@manningoutdoor.com

## INTERNATIONAL ACCOUNT TERRITORIES

### ASIA/CANADA BRAND MANAGER

Kevin Taylor, ph 503.535.5726  
kevin.taylor@penwool.com

### JAPAN

Sojitz Infinity  
ph 080-6863-3780  
fax 03-6867-1556  
shop@pendleton-web.shop-pro.jp

### AUSTRALIA

Harbour Supply Co.  
James Smart, ph + 61 (0)457 922 308  
james@harboursupplyco.com.au

### CANADA

Ray Fine Enterprises, ph 1.819.684.5551  
wholesale@pendleton.ca

### EUROPE BRAND MANAGER

Laura Verdugo, ph 503.535.5567  
laura.verdugo@penwool.com

### GREAT BRITAIN, ITALY, SPAIN, PORTUGAL, SWITZERLAND, FRANCE, NETHERLANDS, GERMANY, AUSTRIA

Options, Joe Sharpe  
ph + 44 20 7609 9889  
info@options.org.uk

### SCANDINAVIA, FINLAND, BALTICS

Lewini Agency, Sofia Lewini  
ph + 46 703032433  
sofia@lewiniagency.com

## LICENSED PARTNERS

### BRITANNICA HOME FASHIONS

Fashion bedding  
212.764.3851  
lmacleay@bhf-usa.com

### CAROLINA PET

Pet products  
803.364.9333  
info@carolinapetcompany.com

### CHINOOK FOOTWEAR

Men's and Women's footwear  
503-968-8868  
info@pendletonfootwear.com

### CHRONICLE BOOKS

Notebooks, note cards, books & games  
customer.service@hbgusa.com

### DOWNLITE

Down bedding, pillows & throws  
513.229.3696 x 450  
bparnes@downlite.com

### FIBERLOK

Mouse pads and coasters  
970.221.1200  
sales@mouserug.com

### FOX RIVER MILLS

Hosiery  
1.800.247.1815  
cs@foxrivermills.com

### OLIVET INTERNATIONAL

Luggage  
585.813.2245  
nicolek@olivetintl.com

### PHOENIX FOOTWEAR

Rubber boots  
800.526.8151  
orders@phxg.com

### PROXIMO SPIRITS

Whisky  
tbledsoe@proximospirits.com

### SHWOOD

Sunglasses  
503.781.5179  
dan@shwoodshop.com

### SOUTHWEST LOOMS

Wool rugs  
919.489.8362  
info@southwestlooms.com

### SUNBRELLA

Performance fabrics  
336.586.1235  
agant3@glenraven.com

### YETI YOGA

Yoga mats and accessories  
415.756.9352  
nicholas@yeti-yogaco.com