



SPRING 2023

PENDLETON[®]

WOMENSWEAR

RETAIL PRICING



CELEBRATING A CENTURY: THE HARDING PATTERN

In 1923, First Lady Florence Harding came west with President Warren G. Harding to dedicate a portion of the old Oregon Trail. At the ceremony, local chiefs presented the First Lady with a Pendleton shawl inspired by our famous Chief Joseph blanket. This dynamic design, named for Florence Harding, has been in production ever since. For 100 years it has remained popular in apparel, accessories, and of course, as a blanket woven in our Pendleton, Oregon mill.



SIERRA SPRINGS CARDIGAN
TC641-87144 (page 5)



HARDING OPEN FRONT CARDIGAN
TC405-87124 (page 12)



WILLA JACKET
TF612-16097 (page 3)



COTTON GRAPHIC SWEATER
TC237-87140, TC237-87141 (page 4)



HARDING COTTON PULLOVER HOODIE
TC628-87166 (page 9), TC628-87128 (page 12)



16097 Shale Mix Harding

TF612
WILLA JACKET
 100% Virgin Wool, 15.1 oz.
 24", Dry Clean, XXS-XXL
 IMPORTED OF U.S.A. FABRIC
 \$399.00



87127 Vintage Indigo Multi

TC614
HERITAGE MERINO PULLOVER
 100% Merino Wool
 22", Hand Wash, XXS-XL
 \$249.00



32562 Tan Mix/Ivory Buffalo Check

TM516
WOOL SHACKET
 75% Virgin Wool, 25% Lambswool - Oregon Tweed®
 30", Dry Clean, XXS-XL
 IMPORTED OF U.S.A. FABRIC
 \$299.00



87125 Irish Cream Multi

TC629
TAOS GRAPHIC CARDIGAN
 87% Cotton, 13% Merino Wool
 25", Hand Wash, XXS-XL
 \$319.00



87126 Navy Multi

TC666
FRINGE SHAWL CARDIGAN
 70% Cotton, 30% Merino Wool
 22", Hand Wash, XXS-XL
 \$249.00



87120 Brown/Cream Multi

TC208
ROCK POINT CARDIGAN
 100% Tanguis Cotton
 28", Machine Wash, XXS-XL
 \$199.00



87130 Soft Ecu



87131 Misty Rose



73586 Brandied Plum



87132 Dark Indigo



60001 Black

TB304
MCKENZIE TEE
 57% Organic Cotton, 38% Lenzing™ Modal, 5% Spandex
 23", Machine Wash, XXS-XL
 \$59.50

DESERT DAWN

The beauty and resilience of North American deserts come to life in a classic nine element pattern. At twilight, flora and fauna awaken in the respite provided by cooler night temperatures. At dawn, desert life settles down, conserving water and energy to survive in these remote and rugged landscapes.



LIMITED EDITION

16089 Desert Dawn Blue

TJ367
JACQUARD WOOL JUMPER
 100% Virgin Wool, 15.1 oz.
 39", Dry Clean, XXS-XL
 IMPORTED OF U.S.A. FABRIC
 \$369.00



69848 Denim/Desert Dawn

TF616
DENIM/WOOL TRUCKER JACKET
 99% Cotton, 1% Spandex
 Trim: 100% Virgin Wool
 Lining: 100% Cotton
 22", Dry Clean, XXS-XXL
 \$269.00



69849 Misty Rose Cowgirl

TM546
WINONA PUFF SLEEVE SHIRT
 100% Cotton
 25.5", Machine Wash, XXS-XL
 \$109.00



69866 Purple/Ivory Multi

69867 Blue/Ivory Multi

TM528
HALF-ZIP PULLOVER
 100% Cotton Chamois
 26", Machine Wash, XXS-XL
 \$179.00



87140 Cool Blue Multi

87141 Rust Ochre Multi

TC237
COTTON GRAPHIC SWEATER
 100% Cotton
 25", Hand Wash, XXS-XL
 \$149.00



87142 Irish Cream Multi

TC634
DESERT DAWN
MOCKNECK PULLOVER
 100% Tanguis Cotton
 24", Machine Wash, XXS-XL
 \$149.00



87130 Soft Ecru

73586 Brandied Plum

87132 Dark Indigo

11/25
TB304
MCKENZIE TEE
 57% Organic Cotton, 38% Lenzing™ Modal, 5% Spandex
 23", Machine Wash, XXS-XL
 \$59.50



32570 Brick Block Plaid

11/25
TM534
CROPPED WOOL SHIRT
 100% Umatilla Virgin Wool
 23"/25", Machine Wash, XXS-XL
 IMPORTED OF U.S.A. FABRIC
 \$169.00





16091 Santa Fe Stripe

TF615
SANTA FE
JACQUARD JACKET
 100% Virgin Wool, 20.3 oz.
 28", Dry Clean, XXS-XXL
 IMPORTED OF U.S.A. FABRIC
 \$449.00



87143 Red/Sand Multi

TC631
WESTERN SCENIC CARDIGAN
 100% Cotton
 21", Machine Wash, XXS-XL
 \$169.00



87144 Brown Sugar Multi

TC641
SIERRA SPRINGS CARDIGAN
 100% Cotton
 30", Hand Wash, XXS-XXL
 \$189.00



69870 Medium Blue

TJ366
CHAMBRAY SHIRT DRESS
 100% Cotton
 37.5", Machine Wash, XXS-XL
 \$199.00



87121 Redwood Multi

11/25
TC677
WESTERLEY COTTON CARDIGAN
 100% Cotton
 23", Machine Wash, XXS-XL
 \$199.00



69846 Sahara Sand/Redwood Plaid

11/25
TM530
BOYFRIEND FLANNEL SHIRT
 100% Cotton
 27"/28", Machine Wash, XXS-XXL
 \$89.50



32571 Blue Ombre

11/25
TM545
MEREDITH WOOL SHIRT
 100% Umatilla Virgin Wool
 27"/28", Machine Wash, XXS-XL
 IMPORTED OF U.S.A. FABRIC
 \$179.00



32569 Turquoise Multi Stripe

11/25
TM400
WOMEN'S BOARD SHIRT
 100% Umatilla Virgin Wool
 27", Machine Wash, XXS-XL
 IMPORTED OF U.S.A. FABRIC
 \$179.00



87138 Blue Multi Stripe

12/25
TB317
DESCHUTES RINGER TEE
 100% Cotton
 24", Machine Wash, XXS-XL
 \$49.50



87139 Rust/Blue Multi Stripe

MOONLIGHT MESA

When the moon casts its rays over the Southwestern desert, the vivid hues of day become soft and muted. The quiet beauty of moonlight on mesas inspired this woven representation of a night journey through a magnificent desert landscape. Mesas, pictured as stepped patterns, symbolize the upward path toward life change.



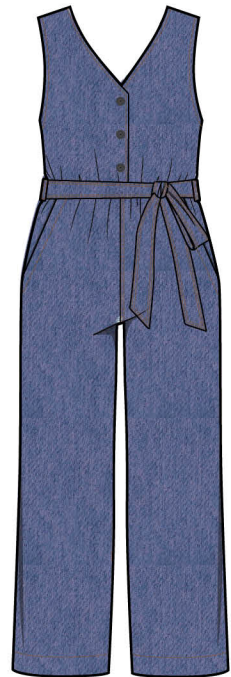
16095 Blue Mix Moonlight Mesa

TF605
JACQUARD WRAP JACKET
 100% Virgin Wool, 15.1 oz.
 28", Dry Clean, XXS-XXL
 IMPORTED OF U.S.A. FABRIC
 \$399.00



87146 Vintage Blue Multi

TC609
ELLIS COVE CARDIGAN
 100% Cotton
 23", Hand Wash, XXS-XXL
 \$199.00



69870 Medium Blue

TH247
S/L CHAMBRAY JUMPSUIT
 100% Cotton
 25" inseam, Machine Wash, XXS-XL
 \$189.00



87150 Dark Indigo Multi

TC284
PACIFIC GRAPHIC DUSTER SWEATER
 93% Cotton Slub, 7% Nylon
 46", Machine Wash, XXS-XL
 \$219.00



69844 Ivory/Indigo Plaid



69845 Navy Multi Plaid

11/25
TM530
BOYFRIEND FLANNEL SHIRT
 100% Cotton
 27"/28", Machine Wash, XXS-XXL
 \$89.50



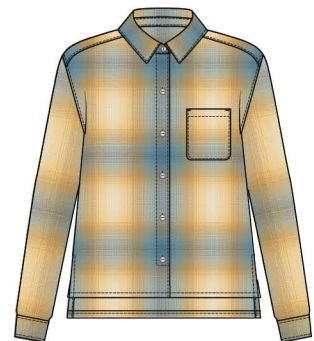
87123 Natural Stone Multi

11/25
TC678
HERITAGE SHETLAND CARDIGAN
 100% Shetland Wool
 29", Machine Wash, XXS-XL
 \$199.00



69856 Blue Opal Springs Multi

TM547
BUTTON FRONT BEACH HOODIE
 100% Lightweight Cotton Chamois
 25", Machine Wash, XXS-XL
 \$179.00



32566 Blue/Gold Ombre

11/25
TM534
CROPPED WOOL SHIRT
 100% Umatilla Virgin Wool
 23"/25", Machine Wash, XXS-XL
 IMPORTED OF U.S.A. FABRIC
 \$169.00





69852 Misty Rose Floral

TM546
WINONA PUFF SLEEVE SHIRT
 100% Cotton
 25.5", Machine Wash, XXS-XL
 \$109.00



87148 Ivory Multi

TC648
BISHOP SLEEVE COTTON PULLOVER
 100% Cotton
 20", Machine Wash, XXS-XL
 \$159.00



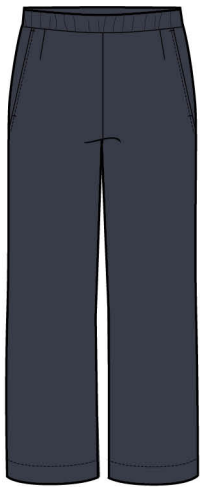
87147 Sky Blue Multi

TC633
RAGLAN COTTON GRAPHIC SWEATER
 100% Cotton
 22", Hand Wash, XXS-XL
 \$129.00



32568 Copper Multi Stripe

11/25
TM544
MEREDITH WOOL SHIRT
 100% Umatilla Virgin Wool
 27"/28", Machine Wash, XXS-XL
 IMPORTED OF U.S.A. FABRIC
 \$179.00



69857 Dark Indigo

3/25
TH245
BROADWAY LINEN PANT
 100% Heavyweight Linen
 27" inseam, Machine Wash, XXS-XL
 \$149.00



69853 Indigo Multi Stripe

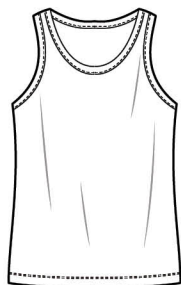
TF619
COTTON CHORE JACKET
 100% Cotton Chamoi
 Random Stripe Placement
 27.5", Machine Wash, XXS-XL
 \$199.00



69868 Tan Chief Joseph

69869 Blue Chief Joseph

TM535
LONG BEACH CHAMOIS SHIRT
 100% Lightweight Cotton Chamoi
 27"/28", Machine Wash, XXS-XXL
 \$149.00



60120 White



87132 Dark Indigo



60001 Black

TB301
MARINA TANK TOP
 57% Organic Cotton, 38% Lenzing™ Modal, 5% Spandex
 23.5", Machine Wash, XXS-XL
 \$45.00



32567 Blue/Rust Ombre

11/25
TM470
BOYFRIEND BOARD SHIRT
 100% Umatilla Virgin Wool
 29", Machine Wash, XXS-XL
 IMPORTED OF U.S.A. FABRIC
 \$169.00





87149 Natural/Blush Multi

TC602
PACIFIC GROVE
BELTED CARDIGAN
 100% Cotton
 30", Hand Wash, XXS-XL
 \$279.00



83017 Red Ochre

TM538
S/S BUTTON FRONT SHIRT
 100% Cotton Gauze
 24.5"/25.5", Machine Wash, XXS-XL
 \$129.00



69861 Ivory Desert Multi

TM550
S/S BUTTON FRONT SHIRT
 100% Cotton Gauze
 24.5"/25.5", Machine Wash, XXS-XL
 \$129.00



87162 Sunset Multi Stripe

TC647
MAE STRIPED
COTTON CARDIGAN
 100% Cotton
 20", Hand Wash, XXS-XL
 \$189.00



87130 Soft Ecru 72220 Dried Tobacco

1/25
TB305
CROPPED DESCHUTES GRAPHIC TEE
 100% Cotton
 22.5", Machine Wash, XXS-XL
 \$49.50



69854 Tapenade Multi Stripe

2/25
TF619
COTTON CHORE JACKET
 100% Cotton Chamois
 Random Stripe Placement
 27.5", Machine Wash, XXS-XL
 \$199.00



87163 Linen Multi

TC276
S/S GRAPHIC PULLOVER
 100% Cotton Slub
 24", Machine Wash, XXS-XL
 \$99.50



69857 Dark Indigo

TH248
PULL ON LINEN SHORTS
 100% Heavyweight Linen
 3" inseam, Machine Wash, XXS-XL
 \$99.50



72208 Skylight 72220 Dried Tobacco 60120 White 87164 Coral

TB276
S/S V-NECK TEE
 100% Cotton Slub
 24", Machine Wash, XXS-XL
 \$59.50



69855 Opal Springs Multi

2/25
TM547
BUTTON FRONT BEACH HOODIE
 100% Lightweight Cotton Chamois
 25", Machine Wash, XXS-XL
 \$179.00



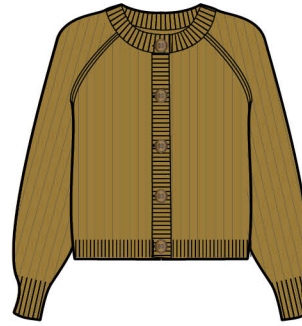
69863 Red Ochre Multi Plaid

TJ368
ASTORIA SLIP DRESS
 55% Linen, 45% Rayon
 Lining: 100% Cotton
 49.5", Machine Wash, XXS-XL
 \$179.00



69863 Red Ochre Multi Plaid

TM536
V-NECK TANK
 55% Linen, 45% Rayon
 21.5", Machine Wash, XXS-XL
 \$89.50



87160 Dried Tobacco

3/25
TC611
MAE COTTON CARDIGAN
 100% Cotton
 20", Hand Wash, XXS-XL
 \$189.00



87167 Aqua/Orange Multi

TC670
BOLD STRIPE
COTTON PULLOVER
 100% Tanguis Cotton
 22", Machine Wash, XXS-XL
 \$199.00



87165 Natural Linen Multi

TC612
HARDING PACIFIC
DUSTER SWEATER
 93% Cotton Slub, 7% Nylon
 46", Machine Wash, XXS-XL
 \$219.00



87166 Ivory Heather Multi

TC628
HARDING COTTON
PULLOVER HOODIE
 96% Cotton, 4% Polyester
 24.5", Machine Wash, XXS-XL
 \$229.00



87168 Red Ochre/Indigo Multi

TC668
LONE PINE CAMP
CARDIGAN
 100% Cotton
 24.5", Hand Wash, XXS-XXL
 \$219.00



69865 Vintage Indigo

TJ365
CASCADE LAKE
DRESS
 100% Rayon
 41", Machine Wash, XXS-XL
 \$159.00



32572 Apricot Ombre

11/25
TM391
WOMEN'S BOARD SHIRT
 100% Umatilla Virgin Wool
 27", Machine Wash, XXS-XL
 IMPORTED OF U.S.A. FABRIC
 \$179.00



32571 Blue Ombre

11/25
TM470
BOYFRIEND BOARD SHIRT
 100% Umatilla Virgin Wool
 29", Machine Wash, XXS-XL
 IMPORTED OF U.S.A. FABRIC
 \$169.00



DOUBLESOFT COTTON CHAMOIS

100% cotton sheared and brushed on both sides for a velvety smooth hand and unmatched comfort. Washable, wearable, durable.



69855 Opal Springs Multi

69856 Blue Opal Springs Multi



69868 Tan Chief Joseph

69869 Blue Chief Joseph



69866 Purple/Ivory Multi

69867 Blue/Ivory Multi

TM547
BUTTON FRONT BEACH HOODIE
 100% Lightweight Cotton Chamois
 25", Machine Wash, XXS-XL
 \$179.00

TM535
LONG BEACH CHAMOIS SHIRT
 100% Lightweight Cotton Chamois
 27"/28", Machine Wash, XXS-XXL
 \$149.00

1/25
TM528
HALF-ZIP PULLOVER
 100% Cotton Chamois
 26", Machine Wash, XXS-XL
 \$179.00



87130 Soft Ecru

87131 Misty Rose

73586 Brandied Plum

87132 Dark Indigo

60001 Black



60120 White

87132 Dark Indigo

60001 Black

11/25
TB304
MCKENZIE TEE
 57% Organic Cotton, 38% Lenzing™ Modal, 5% Spandex
 23", Machine Wash, XXS-XL
 \$59.50

TB301
MARINA TANK TOP
 57% Organic Cotton, 38% Lenzing™ Modal, 5% Spandex
 23.5", Machine Wash, XXS-XL
 \$45.00



72208 Skylight

72220 Dried Tobacco

60120 White

87164 Coral

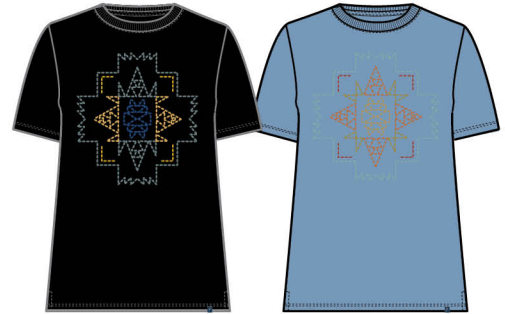
3/25
TB276
S/S V-NECK TEE
 100% Cotton Slub
 24", Machine Wash, XXS-XL
 \$59.50

DESCHUTES COTTON *Pendleton's signature Deschutes cotton knits, a customer favorite in 7.4 oz. combed cotton jersey, are known for their rich colors, soft, substantial hand and lasting quality.*



87134 Olive Green 87135 Rust Ochre 87136 Soft Gold 87159 Navy

12/25
TB310
DESCHUTES RAGLAN SLEEVE TEE
 100% Cotton
 25", Machine Wash, XXS-XL
 \$45.00



60001 Black 87137 Sky Blue

TB263
DESCHUTES EMBROIDERED TEE
 100% Cotton
 26", Machine Wash, XXS-XL
 \$49.50



87130 Soft Ecru 72220 Dried Tobacco

TB305
CROPPED DESCHUTES GRAPHIC TEE
 100% Cotton
 22.5", Machine Wash, XXS-XL
 \$49.50



87138 Blue Multi Stripe 87139 Rust/Blue Multi Stripe

12/25
TB317
DESCHUTES RINGER TEE
 100% Cotton
 24", Machine Wash, XXS-XL
 \$49.50

HERITAGE TEES *Our Pendleton Heritage T-shirts are made from 30 singles yarn, 4.3 oz. soft washed 100% combed ring spun cotton. The assortment celebrates our iconic blanket patterns and authentic connection to America's landscapes.*



87175 Seafoam Green 87173 Gold 87174 Black 87118 Blue Fog 87171 Gold/Green 87172 Navy

TB319
LANDSCAPE LOGO GRAPHIC TEE
 100% Cotton
 24", Machine Wash, XS-XXL
 \$34.50

TB318
RODEO COWGIRL GRAPHIC TEE
 100% Cotton
 24", Machine Wash, XS-XXL
 \$34.50

TB316
CHIEF JOSEPH GRAPHIC TEE
 100% Cotton
 24", Machine Wash, XS-XXL
 \$34.50

TB314
GLACIER PARK GRAPHIC TEE
 100% Cotton
 24", Machine Wash, XS-XXL
 \$34.50

TB327
YELLOWSTONE PARK GRAPHIC TEE
 100% Cotton
 24", Machine Wash, XS-XXL
 \$34.50

TB320
CRATER LAKE PARK STRIPE TEE
 100% Cotton
 24", Machine Wash, XS-XXL
 \$34.50

STYLES WITH HERITAGE

These special garments derive inspiration from the Pendleton archives in pattern, style, and design. From our earliest women's "sporting coats" to sweaters worn by today's influencers and celebrities, these pieces embody classic American style.



87124 Navy Multi

TC405
HARDING OPEN FRONT CARDIGAN
 87% Cotton, 13% Merino Wool
 34", Hand Wash, XXS-XL
 \$349.00



87121 Redwood Multi

TC677
WESTERLEY COTTON CARDIGAN
 100% Cotton
 23", Machine Wash, XXS-XL
 \$199.00



73528 Tan/Brown Multi

TC835
LONG WESTERLEY CARDIGAN
 100% Lambswool
 30", Dry Clean, XXS-XXL
 \$269.00



87123 Natural Stone Multi

TC678
HERITAGE SHETLAND CARDIGAN
 100% Shetland Wool
 29", Machine Wash, XXS-XL
 \$199.00



87120 Brown/Cream Multi

TC208
ROCK POINT CARDIGAN
 100% Tanguis Cotton
 28", Machine Wash, XXS-XL
 \$199.00



87128 Black Heather Multi

TC628
HARDING COTTON PULLOVER HOODIE
 96% Cotton, 4% Polyester
 24.5", Machine Wash, XXS-XL
 \$229.00

UMATILLA® WOOL

A versatile medium-weight plain or twill weave woolen, Umatilla Wool® is perfect for indoor and outdoor wear. The fabric takes its name from Oregon's Umatilla County, where Pendleton buys wool from local sheep ranchers, and home of the original Pendleton Woolen Mill in Pendleton, Oregon.



32567 Blue/Rust Ombre

32571 Blue Ombre



32570 Brick Block Plaid

32566 Blue/Gold Ombre

TM470 BOYFRIEND BOARD SHIRT

100% Umatilla Virgin Wool
29", Machine Wash, XXS-XL
IMPORTED OF U.S.A. FABRIC
\$169.00



TM534 CROPPED WOOL SHIRT

100% Umatilla Virgin Wool
23"/25", Machine Wash, XXS-XL
IMPORTED OF U.S.A. FABRIC
\$169.00



32572 Apricot Ombre



32569 Turquoise Multi Stripe



32568 Copper Multi Stripe



32571 Blue Ombre

TM391 WOMEN'S BOARD SHIRT

100% Umatilla Virgin Wool
27", Machine Wash, XXS-XL
IMPORTED OF U.S.A. FABRIC
\$179.00



TM400 WOMEN'S BOARD SHIRT

100% Umatilla Virgin Wool
27", Machine Wash, XXS-XL
IMPORTED OF U.S.A. FABRIC
\$179.00



TM544 MEREDITH WOOL SHIRT

100% Umatilla Virgin Wool
27"/28", Machine Wash, XXS-XL
IMPORTED OF U.S.A. FABRIC
\$179.00



TM545 MEREDITH WOOL SHIRT

100% Umatilla Virgin Wool
27"/28", Machine Wash, XXS-XL
IMPORTED OF U.S.A. FABRIC
\$179.00



DOUBLEBRUSHED FLANNEL

Soft and sturdy, this 100% cotton flannel is brushed on both sides for cozy comfort.



69844 Ivory/Indigo Plaid



69845 Navy Multi Plaid



69846 Sahara Sand/Redwood Plaid

TM530 BOYFRIEND FLANNEL SHIRT

100% Cotton
27"/28", Machine Wash, XXS-XXL
\$89.50

OUTERWEAR

Dry Goods, Iconic Patterns, Rainwear



83243 Carico Lake Natural 83242 Carico Lake Navy

C1276
ANGELICA BERBER JACKET
 90% Polyester, 10% Acrylic Berber shell
 100% Cotton lining
 100% Polyester corduroy trim
 Snap front, welt pockets, inside patch pocket
 25.5", Machine Wash, XS-XXL
 \$185.00

**PENDLETON
 DRY GOODS**



83244 Carico Lake Natural

C1277
MARIPOSA BERBER HOODIE
 90% Polyester, 10% Acrylic shell
 100% Cotton lining
 Polyester ripstop binding
 Zip front, layback hood, inside patch pocket
 25.5", Machine Wash, XS-XXL
 \$185.00

**PENDLETON
 DRY GOODS**



83245 Spice Papago Quilt

CW278
**DESERT ROSE PAPAGO
 QUILT JACKET**
 60% Cotton, 40% Polyester shell
 80% Polyester, 20% Cotton lining
 100% Polyester fill (80gm insulation)
 Random pattern placement
 Snap front, drawcords at waist
 30", Machine Wash, XS-XL
 \$190.00



83249 Lime



83099 Navy

CW280
SORREL HOODED RAIN SLICKER
 100% Polyurethane backed with 100% Cotton
 100% Polyester patterned flannel lining
 100% Waterproof
 Welded seam construction with waterproof zippers & drawcord hood
 Welt pockets, inside pocket
 32", Machine Wash, XS-XXL
 \$195.00



83133 Red

83228 Sunset

83129 Black

CW177
PARADISE MINI RIPSTOP TREKKING JACKET
 100% Polyester ripstop shell with plant based Sorona® fibers
 100% Polyester patterned flannel lining with mesh
 Stand collar with hidden hood
 Waterproof zippers
 Water Resistant membrane
 Critically seam sealed
 29.5", Machine Wash, XS-XXL
 \$185.00

KEY



Wool Woven in our United States Mills



Washable Wool

Product imported unless otherwise noted

\$Suggested Retail Price

WOMEN'S SIZE CHART

HOW TO MEASURE FOR SIZE

Note: Regular target length equals Size 10

BUST

Measure under your arms and around the fullest part of your bust.

WAIST

Keeping the measuring tape comfortable, measure around the smallest part of your waist.

HIP

Measure around the fullest part of your hips.

WOMEN'S REGULAR

	XXS		XS		S		M		L		XL		XXL	
		0	2	4	6	8	10	12	14	16	18			
BUST	31½	32½	33½	34½	35½	36½	37½	39	40½	42¼	44	45¾	47½	
WAIST	25½	26½	27½	28½	29½	30½	31½	33	34½	36¼	38	39¾	41½	
HIP	34½	35½	36½	37½	38½	39½	40½	42	43½	45¼	47	48¾	50½	

SALES NOTES

REORDERS: 1-800-522-9665 (WOOL)

Reorders should be ready for shipment within three business days.

MANUFACTURER'S SUGGESTED RETAIL PRICE

The Suggested Retail Price is only a suggestion by Pendleton. It is each retailer's independent responsibility to determine the appropriate retail price for the product.

TERMS OF SALE

Orders are subject to the terms of sales as per our sales order forms, which include the following: "The purchaser will not sell the goods, or any part thereof, to another dealer or to any other reseller, and will not sell the goods through the Internet without the written consent of Pendleton Woolen Mills."

SHIPPING PERIODS

Available November	10/25 Start, 11/30 Complete
Available December	11/25 Start, 12/31 Complete
Available January	12/25 Start, 1/31 Complete
Available February	1/25 Start, 2/28 Complete
Available March	2/25 Start, 3/31 Complete
Available April	3/25 Start, 4/30 Complete
Available May	4/25 Start, 5/31 Complete

SHIPPING INFORMATION

FCA PENDLETON DISTRIBUTION CENTER
Bellevue, Nebraska, USA Incoterms® 2010

NATIONAL SALES MANAGERS

APPAREL

Steve Ludeman
ph 503.535.5522
steve.ludeman@penwool.com

HOME & ACCESSORIES

Chris Callahan
ph 503.535.5890
chris.callahan@penwool.com

Pendleton Woolen Mills
PO Box 3030
Portland, OR 97208-3030
503.226.4801, Fax 503.535.5502
Reorders 800.522.WOOL (9665)

PWMWHS.COM

Pendleton's wholesale site has current price lists, product information guides, point-of-sale images and more.

  @PENDLETONWOOLENMILLS

   @PENDLETONWM

UNITED STATES ACCOUNT MANAGER TERRITORIES

NORTHWEST REGION

WOMEN'S, HOME & ACCESSORIES
Mary Anne Suzick, c 206.850.4192
maryanne.suzick@penwool.com

NORTHWEST REGION

MEN'S & ACCESSORIES
Allison Bowes, c 503.928.1069
sales@thedeliverygroup.com

NORTHERN CALIFORNIA

ALL DIVISIONS
Heidi Oneto, c 209.602.0596
honeto.sales@gmail.com

SOUTHERN CALIFORNIA

ALL DIVISIONS
Casey Fleming, ph 714.803.7873
ksea.sales@gmail.com

ROCKY MOUNTAIN REGION

ALL DIVISIONS
Jeanette Palmer, c 310.729.2083
fx 949.419.2295
jeanettepalmer.pendleton@gmail.com

UPPER MIDWEST REGION

ALL DIVISIONS
Steve Schroeder, c 952.212.7447
ssdarth44@gmail.com

CENTRAL REGION

MEN'S, HOME & ACCESSORIES
Lynn Fisher, ph 913.481.8587
lynn.fisher@penwool.com

CENTRAL REGION

WOMEN'S & ACCESSORIES
Jack Hunton c 214.533.4807
ph 214.688.1551 fx 214.749.0322
jack@huntonandcompany.com

MIDWEST REGION

ALL DIVISIONS
Bill Linsmayer, ph 269.921.5229
bill@scoutsalesco.com

SOUTHEAST REGION

ALL DIVISIONS
Michael Novak, ph 410.804.3118
mnovak1170@hotmail.com

NORTHEASTERN REGION

ALL DIVISIONS
Geoff Manning, ph 401.635.2391
geoff@manningoutdoor.com

NEW YORK CITY *Showroom by appointment only:*

Geoff Manning, ph 401.635.2391
214 W. 39th Street #1007
New York, New York 10018
geoff@manningoutdoor.com

INTERNATIONAL ACCOUNT TERRITORIES

ASIA/CANADA BRAND MANAGER

Kevin Taylor, ph 503.535.5726
kevin.taylor@penwool.com

JAPAN

Sojitz Infinity
ph 080-6863-3780
fax 03-6867-1556
shop@pendleton-web.shop-pro.jp

AUSTRALIA

Harbour Supply Co.
James Smart, ph + 61 (0)457 922 308
james@harboursupplyco.com.au

CANADA

Ray Fine Enterprises, ph 1.819.684.5551
wholesale@pendleton.ca

EUROPE BRAND MANAGER

Laura Verdugo, ph 503.535.5567
laura.verdugo@penwool.com

GREAT BRITAIN, ITALY, SPAIN, PORTUGAL, SWITZERLAND, FRANCE, NETHERLANDS, GERMANY, AUSTRIA

Options, Joe Sharpe
ph + 44 20 7609 9889
info@options.org.uk

SCANDINAVIA, FINLAND, BALTICS

Lewini Agency, Sofia Lewini
ph + 46 703032433
sofia@lewiniagency.com

LICENSED PARTNERS

BRITANNICA HOME FASHIONS

Fashion bedding
646.804.7019
ahaynesworth@bhf-usa.com

CAROLINA PET

Pet products
803.364.9333
info@carolinapetcompany.com

CHINOOK FOOTWEAR

Men's and Women's footwear
503.968.8868
info@pendletonfootwear.com

CHRONICLE BOOKS

Notebooks, note cards, books & games
customer.service@hbgusa.com

DOWNLITE

Down bedding, pillows & throws
513.229.3696 x 371
bmack@downlite.com

FIBERLOK

Mouse pads and coasters
970.221.1200
sales@mouserug.com

FOX RIVER MILLS

Hosiery
1.800.247.1815
cs@foxrivermills.com

OLIVET INTERNATIONAL

Luggage
585.813.2245
nicolek@olivetintl.com

PHOENIX FOOTWEAR

Rubber boots
800.526.8151
orders@phxg.com

PROXIMO SPIRITS

Whisky
tbledsoe@proximospirits.com

SHWOOD

Sunglasses
503.781.5179
dan@shwoodshop.com

SOUTHWEST LOOMS

Wool rugs
919.489.8362
info@southwestlooms.com

SUNBRELLA

Performance fabrics
336.586.1235
gvoorhis@glenraven.com

YUNE YOGA

Yoga mats and accessories
415.756.9352
nicholas@yeti-yogaco.com