

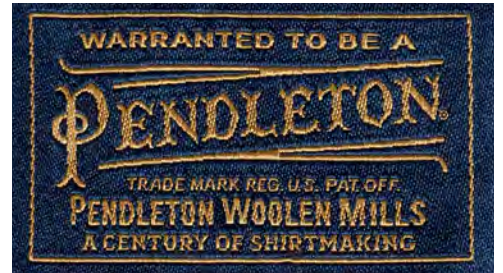
FALL 2024

# PENDLETON®

WOMENSWEAR

## A CENTURY OF SHIRTMAKING

Celebrating Quality Shirts for 100 Years



RETAIL PRICING

5/25 DELIVERY unless otherwise noted



TM565-69933  
MESILLA TAN MULTI  
C/O

### Coastline Overshirt

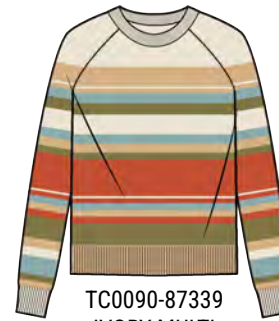
XS-XL Relaxed | \$169.00  
Button front, two chest pockets with flaps, curved shirttail hem. Machine wash, 100% cotton unbrushed DoubleSoft Cotton Chamois, imported, 27/28"



TC0035-87310  
GREY MIST MULTI  
C/O

### Montera Cotton Pullover

XXS-XL Relaxed | \$149.00  
Pullover with crew neck, ribbed hem, dropped shoulders, placed graphic on front. Machine wash, 100% cotton, imported, 23.5"



TC0090-87339  
IVORY MULTI

### Stripe Crew Neck Pullover

XXS-XL Relaxed | \$129.00  
Relaxed fit crew neck, raglan sleeve, all over placed stripe on front, back, sleeves. Machine wash, 95% cotton, 5% cashmere, imported, 23"



TF634-69934  
PASCO BLUE DENIM

### Relaxed Denim/Wool Jean Jacket

XXS-XL Relaxed | \$269.00  
Jean jacket with Pendleton wool back panel, shank buttons, welt front pockets and flap chest pockets. Dry clean, 100% cotton. Back panel: USA-woven 100% virgin wool, imported, 21.5"

### HERITAGE TEES & HOODIES

*Pendleton Heritage T-Shirts made from 30 singles yarn, 4.3oz soft washed 100% combed ring spun cotton. Hoodies by customer request. Designs celebrate our authentic connection to the West.*



TB351-87384 DUSTY ROSE  
RODEO COWGIRL GRAPHIC TEE  
5/25



TB352-87376 VINTAGE BLACK  
CAMPFIRE GRAPHIC TEE  
5/25



TB353-87377 BLUE FOG  
ICONIC GRAPHIC TEE  
5/25



TB354-87378 BONE  
GEOMETRIC GRAPHIC TEE  
7/25



TB356-87379 SEAFOAM  
CHIEF JOSEPH GRAPHIC TEE  
7/25



TB357-87380 OLD GOLD  
LONGHORN GRAPHIC TEE  
7/25

### Graphic Zip Hoodie

XS-XXL | \$99.50  
Zip front, drawstring hood, screened graphic on back. Machine wash, 52% cotton, 48% polyester, imported. 24"



TB359-87375  
HEATHER MAUVE  
WESTERN GRAPHIC ZIP  
HOODIE



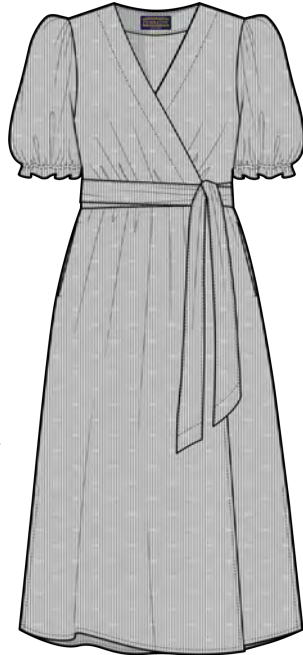
TB358-87381  
HEATHER DEEP TEAL  
HARDING GRAPHIC ZIP  
HOODIE

### Graphic Tees

XS-XXL  
\$34.50  
Machine wash, 100% cotton, imported, 24"

**Puff Sleeve  
Wrap Dress**

XXS-XL  
Classic  
\$139.00  
Wrap style with self-sash, gently puffed sleeves with elastic gather. Machine wash, 100% cotton, imported, 50.5"



TJ380-69938  
VINTAGE INDIGO/WHITE

**Eloise L/S  
Shirt**

XXS-XL Classic  
\$99.50  
Band collar, ruffle accent at collar and cuffs, straight hem with vents. Machine wash, 100% cotton, imported, 24.5"



TM577-69938  
VINTAGE INDIGO/WHITE

**Raglan Cotton  
Graphic Pullover**

XXS-XL Relaxed  
\$139.00  
Pullover with placed Pendleton motif on front, all over stripe on body and sleeves. Raglan sleeves, ribbing at crewneck, cuff and hem. Hand wash, 100% cotton, imported, 21.5"



TC0085-87340  
RUST/BLUE MULTI

**Lowell Wool  
Jacket**

XXS-XL Relaxed  
\$399.00  
Button front, two front patch pockets with flaps, all over placed jacquard pattern. Unlined. Dry clean, 8.9oz, 100% wool jacquard, imported of USA-woven wool, 21"



TF641-16132  
NEHALEM TURQUOISE

**Western Scenic  
Cardigan**

XXS-XL Classic  
\$189.00  
Continuous scenic pattern on front, back, sleeves. Button front, contrast ribbed shawl collar and placket. Machine wash, 100% cotton, imported, 20.5"



TC0072-87311  
BLUE/RUST MULTI  
Rev C/O

**Graphic French  
Terry Pullover**

XXS-XL Relaxed  
\$79.50  
Pullover crewneck with screen print front graphic, dropped shoulders, overstitched seams, easy fit, ribbed neck, cuffs, hem. Machine wash, 100% cotton terry, imported, 21"



TB346-87341  
VINTAGE INDIGO

TB350-87342  
RATTAN

**Embroidered Harding  
Deschutes Tee**

XXS-XL Relaxed  
\$55.00  
Crewneck, raglan sleeves, easy fit, overstitched seams, embroidered motif or screen print on front. Machine wash, 100% cotton, imported, 22"



TB348-87345  
IVORY

TB348-60001  
BLACK

TB345-87343  
CORONET BLUE

5/25 DELIVERY

Pima Cotton Rib Knits

**Rib Baby Tee**

XXS-XL Fitted  
\$59.50  
Machine washable,  
96% cotton, 4%  
Spandex, imported,  
20.5"



TB331-87352 LIGHT BLUE HEATHER  
TB331-60001 BLACK Rev C/O  
TB331-60120 WHITE Rev C/O

**L/S Rib Henley Tee**

XXS-XL Fitted  
\$79.50  
Scoop neckline with  
button placket.  
Machine wash, 96%  
cotton, 4% Spandex,  
imported, 23"



TB347-87356 ANTIQUE GOLD  
TB347-87357 RED OCHRE  
TB347-87358 DARK OLIVE  
TB347-73426 ANTIQUE WHITE  
TB347-60001 BLACK, C/O

6/25 DELIVERY

Wool Shirts

**Boyfriend Board Shirt**

XXS-XL | \$179.00  
A favorite with the straight lines  
of the Men's Original Board  
Shirt®, with a slightly modified  
fit for women. Sport collar with  
loop, two bias pockets with  
flaps, straight hem. Machine  
wash, 100% Umatilla® wool,  
imported of 6.2 oz USA-woven  
virgin wool, 27.5"



TM470-32656 GOLD/GREEN OMBRE  
TM470-32665 BROWN/NAVY/RED 1978 ARCHIVE  
TM470-32666 GREY MIX/AQUA 1992 ARCHIVE

**Women's Board Shirt**

XXS-XL Classic  
\$189.00  
Best selling classic fit,  
matched flap front  
chest pockets, rounded  
hem. Machine wash,  
100% Umatilla® wool,  
imported of 6.2 oz  
USA-woven virgin  
wool, 25.5"



TM586-32677 BLUE MULTI STRIPE  
TM579-32657 NAVY/MAGENTA OMBRE  
TM579-30789 ORIGINAL BLUE SURF PLAID

**Wool Gambler Shirt**

XXS-XL Classic | \$199.00  
Western style with snap closures,  
spread collar, two bias pockets with  
angled flaps, deep shirttail hem.  
Machine wash, 100% Umatilla® wool,  
imported of 6.2 oz USA-woven virgin  
wool, 26"



TM571-32657 NAVY/MAGENTA OMBRE  
TM571-32699 LIGHT BLUE OMBRE

**Oversized Two Pocket Shirt**

XXS-XL Oversized  
\$229.00  
An easy style with spread collar,  
two matched chest pockets with  
button-through flaps, and a  
rounded shirttail hem. Machine  
wash, 100% Umatilla® wool,  
imported of 6.2 oz USA-woven  
virgin wool, 24"



TM580-32656 GOLD/GREEN OMBRE  
TM580-32666 GREY MIX/AQUA 1992 ARCHIVE

**Lana Button Front Dress**

XXS-XL Classic  
 \$169.00  
 Button front with open banded collar, gathers at waist, fuller skirt and gently gathered sleeves. Machine wash, 55% linen, 45% rayon, imported, 48.5"



TJ381-69936  
 IVORY FLORAL



**Wool Mac Coat**

XXS-XL Oversized  
 \$529.00  
 Fully lined, longer jacket length, placed jacquard, button closure, two angled and welted front pockets. Dry clean, Shell: 100% 8.9 oz virgin wool, Lining: 100% polyester, made in the USA, 34.5"



TE269-16133  
 CAPE CREEK TAN

**Sierra Springs Cardigan**

XXS-XL Oversized  
 \$189.00  
 Open front with narrow ribbed placket, two patch pockets, dropped shoulders, placed design on sleeves and back. Hand wash, 100% cotton, imported, 29.5"



TC0036-87312  
 BLACK HARDING MULTI  
 Rev C/O

**Printed Corduroy Gambler Shirt**

XXS-XL  
 \$149.00  
 The signature style of our Gambler shirt in a fine-wale corduroy. Two angled front pockets with flaps, snap closures, shirttail hem. Machine wash, 100% cotton, imported, 27"



TM585-69948  
 SAGE GREEN  
 Rev C/O

**Half Zip Chamois Pullover**

XXS-XL Relaxed  
 \$189.00  
 Half-zip pullover with stand collar, front kangaroo pocket. Made in heavyweight DoubleSoft Cotton Chamois. Machine wash, 100% cotton chamois, imported, 24"



TM583-69935  
 NEHALEM NAVY/  
 RED MULTI

**Oxford Tuxedo Shirt**

XS-XL Classic  
 \$169.00  
 Banded collar, set-in front panel, button front, shirttail hem. Machine wash, 100% cotton oxford, imported, 26"



TM578-60120  
 WHITE

**Button Front  
Chambray Dress**

XXS-XL Classic  
\$169.00  
Button front dress with shirrtail hem. Sleeves gather at shoulder and cuff. Princess seams for shape and style. Machine wash, 100% cotton chambray, imported, 37"



TJ382-69805  
MEDIUM BLUE

**Reversible Wool  
Barn Coat**

XXS-XL Relaxed  
\$429.00  
Fully reversible for two looks in one, thanks to the capabilities of Pendleton's jacquard looms. Button front with two pockets. Dry clean, 11.4 oz 100% virgin wool, Trim: 100% Ultrasuede, imported of USA-woven wool, 27.5"



TE263-16139  
BEACON ROCK COPPER

**Pendleton Souvenir Cardigan**

XXS-XL | \$299.00  
Symbols of the West adorn this button front cardigan with two patch pockets, shawl collar, silver novelty buttons, whipstitch accents. Dry clean, 70% cotton, 30% wool, imported, 22.5"



TC0014-87373  
BUCKSKIN BROWN  
Rev C/O

**Graphic French  
Terry Pullover**

XXS-XL Relaxed  
\$89.50  
Crewneck, dropped shoulders, easy fit, overstitched seams. Machine wash, 100% cotton terry, imported, 21"



TB349-87334  
IVORY



**1930's  
Archive Coat**

XXS-XL Relaxed  
\$599.00

Iconic blanket coat uses the original Harding pattern from the 1920s. Unlined construction, heritage craftsmanship, impeccably placed jacquard pattern. Button front, adjustable button straps at wrists, two front patch pockets, taped interior seams. Dry clean, 82% wool, 18% cotton, 16.5 oz, Made in USA of USA-woven fabric, 41.5"



TE188-15993  
TAN HARDING  
C/O

**Harding Open  
Front Cardigan**

XXS-XL Relaxed  
\$349.00

A favorite returns in warm Fall colors. Shawl collar, open front, two pockets with ribbed welts. Hand wash, 87% cotton, 13% Merino wool, imported, 33.5"



TC405-87313  
SANDSHELL MULTI  
Rev C/O

**Chambray  
Gambler Shirt**

XXS-XL Classic  
\$129.00

The signature style of our Gambler in soft cotton chambray. Two angled pockets with flaps, snap closures, shirttail hem. Machine wash, 100% cotton chambray, imported, 27.5"



TM502-69820  
LIGHT BLUE  
C/O

TM502-69805  
MEDIUM BLUE  
C/O

**Long Westerley  
Cardigan**

XXS-XXL Relaxed  
\$269.00

All the style of The Original Westerley, in a longer length with two side pockets and two-way zip. Dry clean, 100% lambswool, imported, 29.5"



TC835-73528  
TAN/BROWN MULT  
C/O

TC835-73878  
GREY/BLACK  
C/O

**Madison Flannel Shirt**

XXS-XL Relaxed

\$99.50

Button front, two bias-set chest pockets with peaked button flaps, shirttail hem.

Machine wash, 100% DoubleBrushed Cotton Flannel, imported, 27.5"



TM573-69943  
AQUA OMBRE



TM573-69705  
BLACK/GOLD BUFFALO CHECK



TM573-69944  
CREAM MULTI PLAID  
9/25

**Boyfriend Flannel Shirt**

XXS-XL Relaxed

\$99.50

Button front, one open matched chest pocket, hi-lo shirt tail hem. Machine wash, 100% DoubleBrushed Cotton Flannel, imported, 26.5/28"



TM575-69945  
GOLD/BRICK MULTI PLAID



TM575-69946  
ROSE/BROWN OMBRE



TM575-69947  
BLACK MULTI PLAID  
9/25



TM574-61539  
NATURAL  
C/O



7/25 - 8/25 DELIVERY



TE262-16128  
SMITH ROCK GREY  
7/25, C/O

### Jacquard Bomber Jacket

XXS-XL Relaxed | \$549.00  
Iconic style, modern favorite. Snap front, knit ribbing at neck, cuff, hem. Placed jacquard pattern on front, back, sleeves. Fully lined. Dry clean, Shell: 16.5 oz 100% virgin wool, Lining: 100% polyester, Made in USA of USA-woven wool, 25.5"



TF593-16059  
BLACK/TAN HARDING JACQUARD  
7/25, C/O

### Willa Jacket

XXS-XL Relaxed | \$399.00  
Fold-down collar, band hem and cuffs, button front. Placed jacquard pattern. Dry clean, Shell: 11.4 oz 100% virgin wool, Made in USA of USA-woven wool, 23.5"



### Timberline Jacquard Coat

XXS-XL Relaxed  
\$629.00  
1920s Harding pattern from the archives. Unlined blanket coat showcases our heritage craftsmanship with an impeccably placed jacquard pattern. Button placket, button detail at wrists, taped interior seams, two front patch pockets. Dry clean, 16.5 oz 82% wool, 18% cotton, Made in USA of USA-woven fabric, 40.5"



TE244-16072  
BLACK/TAN HARDING  
8/25, C/O

### Graphic Merino Pullover Sweater

XXS-XL Relaxed | \$229.00  
A bestselling pullover style returns with soft colors. Crew neck, ribbing at hem and cuffs. Dry clean, 100% merino wool, imported, 23"



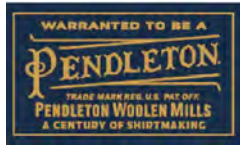
TC0079-87314  
OATMEAL HEATHER STRIPE  
8/25  
C/O

### Graphic Zip Sweater

XXS-XL Relaxed | \$229.00  
Fall colors in a favorite style with ribbed baseball collar, zip front, leather zipper pull, two front pockets. Machine wash, 100% wool, imported, 24.5"



TC698-87316  
OXFORD GREY MULTI  
Rev 8/25  
C/O



# A CENTURY OF SHIRTMAKING

## PENDLETON WOOLEN MILLS

### Centennial Shirt Dress

XS-XL Classic  
\$369.00

Celebrate 100 years of Pendleton shirts with this new style. Button front shirt dress with banded collar and one open chest pocket, crafted in two complimentary plaids drawn from one of our very first shirts. Dry clean, 6.6 oz 100% Umatilla Wool, Made in USA of USA-woven fabric, 23.5/25.5"



TJ383-32698 OXFORD/GREY MIX OMBRE TJ383-32701 RED MIX MULTI OMBRE



TM584-32702 OXFORD MIX/TAN MIX TWILL



TM584-32703 GREY/MAROON TWILL

### Women's Harding Utility Shirt

XS-XL Oversized | \$229.00

Celebrate 100 years of Pendleton shirts with a new style. Button front, utility chest pockets. Made in 100% Umatilla Wool, with contrast 100% 7.4 oz wool fabric in Harding pattern at collar, back yoke, cuffs and pockets. Dry clean, 100% virgin wool, Made in USA of USA-woven fabric, 27.5"

### Women's Centennial Shirt

XS-XL Relaxed  
\$199.00

Celebrate 100 years of Pendleton shirts with this new style. Spread collar, button front, one open chest pocket, full sleeves and curved hi-lo shirttail hem, crafted in two complimentary plaids drawn from one of our very first shirts. Dry clean, 6.6 oz 100% Umatilla Wool, Made in USA of USA-woven fabric, 23.5/25.5"



TM581-32698 OXFORD/GREY MIX OMBRE TM581-32701 RED MIX MULTI OMBRE

**Jolene Wool Fringe Jacket**

XXS-XL Relaxed  
\$299.00

Our mill expertise shows in this unlined longer jacket with rolled fringe at hem and across back yoke. Button front, foldover collar, two generous patch pockets. Dry clean, 100% Virgin Wool, Made in USA of 10.9 oz USA-woven fabric, 31"



TF644-32707  
OXFORD MIX MULTI PLAID



TF650-32708  
BLACK

**Women's Brownsville Coat**

XXS-XL Relaxed | \$579.00  
Women's version of the bestselling Men's coat. Detachable genuine shearling collar, fully lined, button front, two front patch pockets. Dry clean, Shell: 16.5 oz 82% virgin wool, 18% cotton, Lining: 100% polyester twill, Trim: genuine sheep shearling, imported of USA-woven fabric, 29.5"



TE257-16136  
STILLWATER TAN

**Lambswool  
Duster  
Sweater**

XXS-XL Relaxed  
\$299.00

Dramatic duster with open front, two patch pockets, placed graphic on back, front, sleeves. Dry clean, 100% lambswool, imported, 45.5"



TC0077-87319  
BLACK HEATHER MULTI



TC0086-87317  
IVORY MULTI

**Discovery Pullover**

XXS-XL Relaxed  
\$299.00  
Subtle all over tonal pattern, ribbed crew neck and cuffs, deep rib at hem, dropped shoulders. Dry clean, 60% baby alpaca, 40% merino wool, imported, 24"



TM548-69942  
TOSSED CROSS CHARCOAL  
Rev C/O

**Cotton Shacket**

XXS-XL Oversized  
\$229.00  
Sized for easy layering, with slightly dropped shoulder, two chest pockets with button flaps, and shirttail hem. Machine wash, 100% DoubleSoft Cotton Chamois, imported, 27.5"

**Oversized  
Graphic Cardigan**

XXS-XL Oversized  
\$229.00  
Relaxed for easy fit. Button front, raglan sleeve, placed strip and graphic on front, back, sleeves. Dry clean, 80% lambswool, 20% nylon imported, 25"



TC0066-87318  
VINTAGE TAN MULTI

**Heritage Cardigan**

XXS-XL Relaxed  
\$299.00  
Classic cardigan styling with shawl collar, button front, two ribbed pockets. Dry clean, 100% lambswool, imported, 25"



TC0087-87337  
BROWN MIX MULTI



**Hudson Overcoat**

XXS-XL Relaxed  
\$399.00

A signature style for today in Oregon Tweed® woven in our USA mill. Notched collar, two welted front pockets, fully lined. Dry clean, Shell: 75% wool, 25% lambswool, Lining: 100% polyester, Made in USA of 7.4 oz USA-woven wool, 43"



TE265-32679  
TAN/BROWN OVERSIZED GLEN

**Harlow Sweater Vest**

XXS-XL Classic  
\$149.00

Pullover v-neck vest with ribbing at armholes and hem, all over stripe uses Pendleton geometric patterns. Dry clean, 100% lambswool, imported, 21.5"



TC0076-87320  
TAN HEATHER MULTI  
Rev C/O

**Davis One Button Blazer**

2-18 F/L | \$329.00

Oregon Tweed® woven in our USA mill. Notched collar, two front pockets, straight style lines, fully lined. Dry clean, Shell: 75% wool, 25% lambswool, Lining: 100% polyester, imported of 7.4 oz USA-woven wool, 29.5"



TF649-32680  
TAN MIX/BROWN MULTI CHECK  
Rev C/O

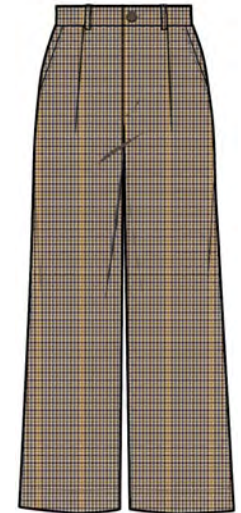
**Wool Trousler Pant**

2-18 Relaxed | \$299.00

Oregon Tweed® woven in our USA mill. High waisted and unlined. Set on waistband with belt loops, zip fly, wide leg, 31.5" inseam. Dry clean, 75% wool, 25% lambswool, imported of 7.4 oz USA-woven wool, 31.5"



TH258-32706  
BLACK HERRINGBONE  
WOOL TROUSER PANT



TH259-32680  
TAN MIX/BROWN MULTI CHECK  
PLAID WOOL TROUSER PANT

8/25 DELIVERY

## Heritage Shetland Collection

### Relaxed Crew Pullover

XXS-XL Relaxed

\$99.50

Crewneck pullover with ribbed hem and cuffs. Washable, 100% wool, imported, 21.5"



TC0031-74337  
DEEP GOLD

TC0031-87365  
DEEP TEAL HEATHER

TC0031-74338  
CHILI RED

TC0031-74514  
STONE HEATHER

TC0031-60702  
BLACK HEATHER  
C/O

### Cropped

### Fisherman Sweater

XXS-XL Relaxed

\$179.00

Crewneck, ribbed hem and cuffs, raglan sleeve, cabling on front, back, sleeves. Washable, 100% wool, imported, 19.5"



TC0007-87374  
BIRCH

TC0007-87362  
DUSTY TEAL HEATHER

TC0007-87363  
BURGUNDY HEATHER

8/25 DELIVERY

## Merino Sweaters

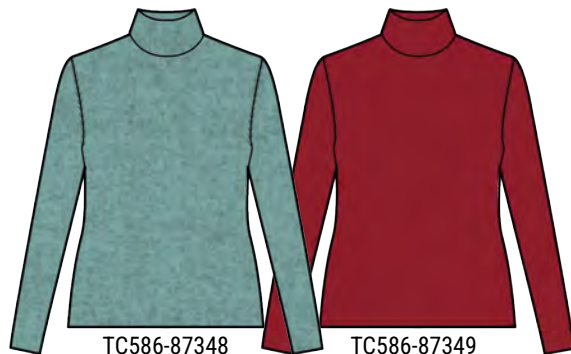
### Rib Merino

### Turtleneck

XXS-XL Fitted

\$119.00

Folded turtleneck, set-in sleeves, smooth with curved style lines. Hand wash, lightweight 100% merino wool, imported, 23.5"



TC586-87348  
ATLANTIC BLUE HEATHER

TC586-87349  
EMBOLDENED RED

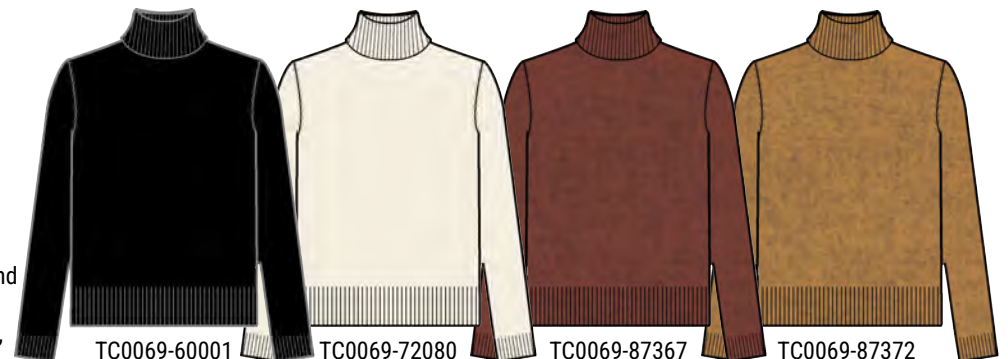
### Merino

### Turtleneck

XXS-XL Classic

\$119.00

Ribbed turtleneck, set-in sleeves, straight style lines with ribbed hem and cuffs. Hand wash, 100% merino wool, imported, 23.5"



TC0069-60001  
BLACK  
C/O

TC0069-72080  
IVORY  
C/O

TC0069-87367  
ARABIAN SPICE  
HEATHER

TC0069-87372  
TAPENADE



**Archive Coat**

XXS-XL Relaxed  
\$599.00  
Iconic blanket coat from the 1920s. Unlined construction, heritage craftsmanship, impeccably placed jacquard pattern. Button front, adjustable button straps at wrists, two front patch pockets, taped interior seams. Dry clean, 82% wool, 18% cotton, Made in USA of 16.5 oz USA-woven fabric, 41.5"



TE234-16127  
FOUR CORNERS BLACK  
Rev C/O



TE245-16135  
MIRROR LAKE TAN

**Jacquard Wool Trench Coat**

XXS-XL Relaxed  
\$579.00  
Sleek and sophisticated double breasted style with asymmetrical placed jacquard pattern, self-belt, two front pockets, fully lined. Dry clean, Shell: 11.4 oz 100% virgin wool, Lining: 100% Polyester lining, imported of USA-woven virgin wool, 41.5"

**Oversized Mockneck Pullover**

XXS-XL Oversized  
\$199.00  
Easy fit, knitted tonal Pendleton geometric graphic. Ribbed mock neck and hem, saddle shoulders with dropped sleeve. Dry clean, 100% lambswool, imported, 24.5"



TC0027-87190  
IVORY  
C/O  
TC0027-87360  
BROWN SUGAR

**Graphic Quarter Zip Pullover**

XXS-XL Oversized  
\$269.00  
Easy fit, high ribbed mock neck, all over Pendleton geometric graphic, slightly dropped shoulders. Dry clean, 100% merino wool, imported, 23"



TC0082-87322  
CHARCOAL MULTI



TC0083-87323  
IRISH CREAM MULTI  
Rev C/O

**Skamania Alpaca Cardigan**

XXS-XL Oversized  
\$429.00  
Luxurious alpaca yarns in a fun fringed wrap style with shawl collar and self-belt. Dry clean, 100% baby alpaca, imported, 29"

**Relaxed Graphic Vest**

XXS-XL Oversized  
\$159.00  
Ribbed crewneck, armholes. Ribbed hem has side vent with buttons. Pendleton geometric design at neck and waist. Dry clean, 100% lambswool, imported, 25.5"



TC0061-87350  
BLACK/IRISH CREAM

**Oversized Graphic Cardigan**

XXS-XL Oversized  
\$229.00  
Relaxed for easy fit. Button front, saddle shoulders, asymmetrically placed graphic on front, back, sleeves. Dry clean, 80% lambswool, 20% nylon imported, 25"



TC0081-87324  
BLACK/TAUPE



TG239-28375  
BLACK

**Wool Fringe Wrap Skirt**

75% Virgin Wool, 25% Lambswool  
2-18 | \$269.00  
Wrap style with button waist and rolled fringe at hem. Lined. Dry clean, 75% virgin wool, 25% lambswool, imported of 7.0 oz USA woven fabric, 34"

**Alpine Lambswool Zip Cardigan**

XXS-XL Relaxed | \$269.00  
Alpine graphics on back, with Pendleton geometric patterns on front, sleeves, shoulders and hem. Zip front, ribbed shawl collar and placket, two front pockets, with ribbing at hem and cuffs. Dry clean, 100% lambswool, imported, 23.5"



TC0074-87325  
BLACK MULTI

**Fair Isle Mockneck Pullover**

XXS-XL Relaxed | \$199.00  
Fair Isle reinterpreted in a Pendleton geometric pattern. Henley button front, ribbed mock neck, hem, cuffs. Hand wash, 100% merino wool, imported, 22.5"



TC386-87326  
LOGANBERRY MULTI  
Rev C/O



TC0080-87327  
OATMEAL MULTI

**Fair Isle Cardigan**

XXS-XL Relaxed | \$249.00  
Fair Isle reinterpreted in a Pendleton geometric pattern. Shaped v-neck, button front, raglan sleeves, two front pockets with ribbing. Dry clean, 100% merino wool, imported, 24"



TF647-32691  
GREEN MIX/BROWN OMBRE

**Wool Shacket**

XXS-XL Oversized | \$349.00  
Button front shirt jacket with shirt collar, two chest pockets with button flaps, slightly dropped shoulders, shirttail hem, easy fit. Dry clean, 75% virgin wool, 25% lambswool, imported of USA-woven, 30"



TC0060-87328  
RANGER STRIPE BLACK MULTI

**Ranger Stripe Cardigan**

XXS-XL Relaxed | \$269.00  
Cozy boyfriend cardigan with shawl collar, button front with woven buttons, two front pockets, and bold stripe design. Dry clean, 100% lambswool, imported, 27"



TC0006-87254  
IVORY MULTI STRIPE

**Camp Stripe Cardigan**

XXS-XL | \$249.00  
A favorite style, a popular stripe. Ribbed shawl collar, button front, two front pockets, self belt, ribbed cuffs and hem. Dry clean, 80% lambswool, 20% nylon, imported, 30"

**Raglan Cotton Graphic Pullover**

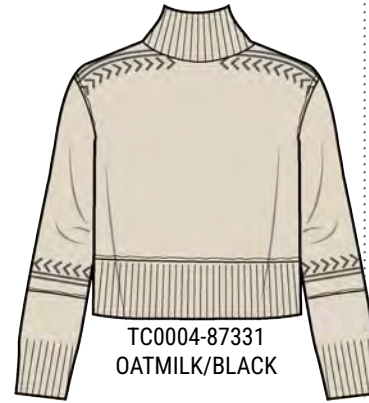
XXS-XL Relaxed  
\$139.00  
Pullover with relaxed ribbed crewneck, placed Pendleton motif on body and raglan sleeves, ribbing at cuff and hem. Hand wash, 100% cotton, imported, 21.5"



TC0055-87330  
DRIFTWOOD MULTI  
Rev C/O

**Vintage Mockneck Pullover**

XXS-XL Relaxed  
\$199.00  
Inspired by vintage ski style. Mock neck, subtle geometric graphics, deep ribbing at hem and sleeves to cuff or not. Hand wash, 100% merino wool, imported, 21"



TC0004-87331  
OATMILK/BLACK



TC0068-87333  
LIGHT BLUE MULTI

TC0068-87383  
GREY MULTI

**Oversized Fair Isle Pullover**

XXS-XL Oversized | \$269.00  
Fair Isle reinterpreted in a Pendleton geometric pattern. Cozy ribbed crewneck, ribbing at hem and cuffs. Hand wash, 89% alpaca, 11% polyamide, imported, 21"



**Plaid Mac Coat**

XXS-XL Oversized  
\$469.00  
Traditional Macintosh styling in USA-woven virgin wool. Button front, raglan sleeves, two welted front pockets, fully lined. . Dry clean, 16.5 oz 100% virgin wool, Made in USA of USA-woven fabric, 35.5"



TE268-32612  
RED/CHARCOAL MULTI PLAID



TC0070-87332  
BLACK MULTI

**Plaid Merino Crew Pullover**

XXS-XL Classic  
\$199.00  
Crewneck with offset placed plaid, ribbed hem and cuffs, trend-right length in soft knit merino. Hand wash, 100% merino wool, imported, 20"

**Alpaca Stripe Crewneck Pullover**

XXS-XL Relaxed  
\$249.00  
All over stripes in soft alpaca knit. Crew neck, slightly dropped shoulders, ribbed hem and cuffs. Machine wash, 89% alpaca, 11% polyamide, imported, 23"



TC0067-87335  
DUSTY BLUE MULTI



TC0089-87336  
IRISH CREAM MULTI

**Blanket Cape**

100% Lambswool  
XS/S, S/M, L/XL | \$249.00  
Artful stripe placement, zip front, knit baseball collar. Machine wash, 100% lambswool, imported, 29"



**Women's Robe**

XS-XL | \$179.00  
 Shawl collar, self belt, two patch pockets in luxurious looped terry. Machine wash, 100% cotton, imported, 43.5"



*Tested for harmful substances and produced sustainably in accordance with OEKO-TEX® guidelines. This purchase is made with materials tested for harmful substances, made in environmentally friendly facilities and made in safe and socially responsible workplaces. Learn more at [madeingreen.com](http://madeingreen.com)*



TK150-87353  
 HARDING SANDSHELL



TK150-87354  
 WYETH TRAIL OATMEAL



TK150-87355  
 TUCSON TURQUOISE



TK150-81922  
 NEHALEM BLACK/RED

**Women's Shortie Pajama Set**

XXS-XL  
 \$89.50  
 Brushed cotton flannel with accent piping. Button top with pocket, drawstring waist shortie bottoms with pockets. Machine wash, 100% cotton, imported, 25" top/3" inseam bottoms



TK155-79567  
 TAN/BLACK/BRICK PLAID



TK155-69937  
 LIGHT BLUE OMBRE

**Women's Pajama Set**

XXS-XL  
 \$99.50  
 Brushed cotton flannel with accent piping. Button top with pocket, drawstring waist bottoms with pockets. Machine wash, 100% cotton, imported, 26" top/27" inseam bottoms



TK152-69941  
 IVORY BRIDGER STRIPE



TK153-69937  
 LIGHT BLUE OMBRE

**Lodge Pine - Barn Coat**

XS-XXL | \$225.00

Jacket with logo slotted buttons secured with grosgrain ribbon in Berber fleece with 16 wale corduroy pockets, facings and undercollar, cotton and poly linings. Pendleton logo patch. Dry clean, Outer shell: 58% polyester, 42% acrylic, Trim: 87% polyester, 13% nylon with TPU membrane, body lining: 100% cotton, imported, 28"



C1392-83323  
Chief Joseph Ivory

C1392-83316  
Four Corners Hunter

**Madrona - Weekender Coat**

XS-XXL | \$225.00

Zip front jacket in Berber fleece with 16 wale corduroy upper body, zipper guard, stand collar and front welt pockets, cotton and poly linings. Pendleton logo patch and zipper. Dry clean, Outer shell: 58% polyester, 42% acrylic, Upper shell: 87% polyester, 13% nylon with TPU membrane for water resistance, body lining: 100% cotton, imported, 28"



C1390-83317  
Brown teal Plaid

C1390-83316  
Four Corners Hunter



C1040-83323  
Chief Joseph-Ivory

C1040-83316  
Four Corners Hunter

**Foxglove - Range Fleece Bomber**

XS-XXL | \$225.00

Zip front, ribbed stand collar, canvas-trimmed welt pockets and zipper frame, Berber fleece with Big Sky Canvas trims, poly and cotton linings, rib at cuffs and hem. Dry clean, shell: 58% polyester, 42% acrylic, 100% cotton body lining, imported, 25"

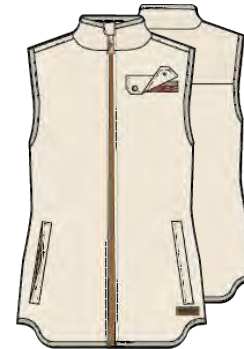


C1038-83029  
Glacier Ivory

**Glacier Sunset Fleece Jacket**

XS-XXL Oversized | \$195.00

Berber fleece shell with zip front, front patch pockets, Big Sky Canvas trims, cotton and poly linings. Dry clean, shell: 100% polyester, body lining and trim: 100% cotton, imported, 29"



C1410-83138  
Bone



C1410-83129  
Black



C1396-83316  
Four Corners Hunter

**Laurel - Vest**

XS-XXL | \$175.00

C1410-LAUREL-Solid Vest with Highland Peak Trim-Outer Shell 100% Polyester Berber  
C1396-LAUREL-Four Corners Hunter-Outer Shell: 58% Poly/42% Acrylic Berber  
Zip front vest in Berber fleece with 16 wale corduroy yoke, collar stand and pockets, mesh lining. Pendleton logo patch, zipper and snaps. Finished with elastic trim bifold binding. Dry clean, Corduroy: 87% polyester, 13% nylon with TPU membrane for water resistance, Lining: 100% Poly Mesh, imported, 25"

**Hazel -  
Swing Coat**

XS-XXL  
\$195.00  
Big Sky Canvas with zip front and snap storm placket, corduroy collar, woven trim tape on center front and pockets and to secure snaps for durability. Metal rivets reinforce stress points. Machine wash, Shell: 10oz, 100% cotton canvas, Body lining: 100% cotton, 27"



C1393-83208  
Saddle

C1393-83138  
Bone

**Wind River -  
Corduroy Trucker**

XS-XXL | \$195.00  
Snap Front 16 wale corduroy jacket, trimmed with woven trim tape, detachable Berber collar and body lining, riveted chest pocket, front welt pockets on patch pocket, Pendleton Logo snaps. Dry Clean, shell: 87% polyester, 13% nylon with TPU membrane for water resistance, lining: 100% polyester, Imported, 25"



C1317-83332  
Roasted Russet

C1317-83208  
Saddle



C1391-83208  
Saddle

C1391-83256  
Dark Olive

**Cedar Creek - Canvas Cord Trim Parka**

XS-XXL | \$225.00  
Big Sky Canvas with zip front and snap storm placket, front welt pockets, corduroy trim on pockets and drawstring helmet hood, hood lined in 1/2 back fleece lining, Metal rivets reinforce stress points. Machine wash, Shell: 10oz, 100% cotton canvas, Corduroy: 87% polyester, 13% nylon with TPU membrane for water resistance, Upper Lining: 58% polyester, 42% acrylic, Lower Lining: 100% cotton, 100% polyester fill, imported, 32"

**Sula -  
Reversible Hooded Jacket**

XS-XXL Slightly Fitted  
\$220.00  
Fully reversible with pockets on both sides. Snug fitting cordless hood, snap front, welt and invisible zippered pockets, packs in back pocket of print side, Pendleton logo trims, water resistant print shell, fill power 400. Machine wash, print shell: 100% polyester, solid shell: 100% nylon, fill: responsibly sourced 90% duck down, 10% duck feather, imported, 25"



CW407-83331  
Solstice Canyon Brown

CW407-83328  
Tucson Black



**Solstice Canyon Pattern**  
*California's Rising Sun Trailhead offers spectacular views of Solstice Canyon, home to many weathered formations in the Santa Monica Mountains National Recreation Area. The largest urban national park in the United States offers 500 miles of hiking trails. Colorful bands represent powerful creeks that have carved canyons among the famed peaks: Sugarloaf, Lady Face, and Saddle Peak. Bands of chaparral cover the mountains, and triangular shapes represent local and imported trees, alive with wild parrots.*

**Sapphire -  
Reversible Parka**

XS-XXL Slightly Fitted  
\$250.00  
Fully reversible 2-way zipper puffer with pockets on both sides. Hooded with bungee drawcord, welt and invisible zippered pockets, packable bag, Pendleton logo trims, water resistant print shell, fill power 400. Machine wash, print shell: 100% polyester, Solid shell: 100% nylon, fill: responsibly sourced 90% duck down, 10% duck feather, imported, 35"



CW191-83331  
Solstice Canyon Brown

CW191-83328  
Tucson Black

**Redwood - Ripstop Parka**

XS-XXL | \$225.00

Pendleton pattern on water resistant ripstop in plant-based Sorona® fiber with Pendloft™ eco-friendly poly fill. Zip front, removable hood lined in fleece, ribbed cuffs, hi-lo hem, Pendleton logo tape, and zippers. Machine wash, shell: 74% polyester/26% Elasterell-P with Sonora®, 100% polyester lining, 100% polyester fill, imported, 32.5"



CW405-83320  
Nehalem Tan

CW405-83330  
Blue Tan Ombre



**Nehalem Pattern**

*Nehalem ("place where people live") is the name of a town, a river, a bay, and a park on Oregon's Pacific coast. Large ovals show the ebbing and rising tides of Nehalem Bay, where crabbing, fishing and clamming are popular pastimes. Triangular tree shapes represent the forested bike and equestrian trails throughout the Nehalem State Park. Legends of Spanish treasure buried on nearby Neahkahnie Mountain inspire the repeated "X" in the pattern's horizontal bands.*

**Hemlock - Ripstop Vest**

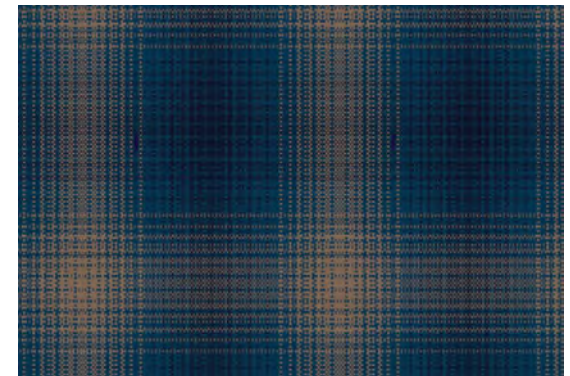
XS-XXL | \$180.00

Pendleton pattern on water resistant ripstop in plant-based Sorona® fiber, with Berber lining and Pendloft™ eco-friendly poly fill. Zip front, stand collar, welt pockets with snaps, Pendleton logo tape, zippers, and snaps. Machine wash, shell: 74% polyester/26% Elasterell-P with Sonora®, 100% polyester lining, 100% polyester fill, imported, 22"



CW406-83320  
Nehalem Tan

CW406-83330  
Blue Tan Ombre





#### Four Corners Pattern

*Located on the Colorado Plateau in the dry and windswept countryside of the Navajo Nation, a bronze disk marks Four Corners, the only point in the United State shared by four states. The repeated intersections in this traditional nine element pattern represent the coming together of Arizona, New Mexico, Colorado and Utah. As early as 1908, travelers have visited the Four Corners region, which also marks the boundary the Navajo Nation and the Ute Mountain Ute Tribe Reservation.*

#### Victoria-A-line Slicker

XS-XXL | \$195.00

Waterproof welded-seam construction in cotton-backed polyurethane with Pendloft™ eco-friendly fill for warmth. Pendleton print lining, zip front, drawstring hood, welt pockets, waterproof zippers, hi-lo hem, extended water guard sleeve cuff. Machine wash, Shell 100% polyurethane backed with 100% cotton, 100% nylon body lining, 100% polyester fill, imported, 38"



CW409-83228  
Sunset



CW409-83327  
Hunter



CW409-83129  
Black

## Women's Size Chart

### HOW TO MEASURE FOR SIZE

Note: Misses target length equals Size 10

### BUST

Measure under your arms and around the fullest part of your bust.

### WAIST

Keeping the measuring tape comfortable, measure around the smallest part of your waist.

### HIP

Measure around the fullest part of your hips.

### WOMEN'S MISSES

	XXS		XS		S		M		L		XL		XXL	
		0	2	4	6	8	10	12	14	16	18			
<b>BUST</b>	31 ½	32 ½	33 ½	34 ½	35 ½	36 ½	37 ½	39	40 ½	42 ¼	44	45 ¾	47 ½	
<b>WAIST</b>	25 ½	26 ½	27 ½	28 ½	29 ½	30 ½	31 ½	33	34 ¼	36 ¼	38	39 ¾	41 ½	
<b>HIP</b>	34 ½	35 ½	36 ½	37 ½	38 ½	39 ½	40 ½	42	43 ½	45 ¼	47	48 ¾	50 ½	

## Sales Notes

### REORDERS: 1-800-522-9665 (WOOL)

Reorders should be ready for shipment within three business days.

### MANUFACTURER'S SUGGESTED RETAIL PRICE

The Suggested Retail Price is only a suggestion by Pendleton. It is each retailer's independent responsibility to determine the appropriate retail price for the product.

### TERMS OF SALE

Orders are subject to the terms of sales as per our sales order forms, which include the following: "The purchaser will not sell the goods, or any part thereof, to another dealer or to any other reseller, and will not sell the goods through the Internet without the written consent of Pendleton Woolen Mills."

### SHIPPING PERIODS

Reorders should be ready for shipment within three business days.

June	5/25 Start, 6/30 Complete
July	6/25 Start, 7/31 Complete
August	7/25 Start, 8/31 Complete
September	8/25 Start, 9/30 Complete
October	9/25 Start, 10/31 Complete
November	10/25 Start, 11/30 Complete
December	11/25 Start, 12/31 Complete

### SHIPPING INFORMATION

FCA PENDLETON  
DISTRIBUTION CENTER  
Bellevue, Nebraska, USA  
Incoterms® 2010

## NATIONAL SALES MANAGERS

### Apparel

Steve Ludeman  
ph 503.535.5522  
steve.ludeman@penwool.com

### Home & Accessories

Chris Callahan  
ph 503.535.5890  
chris.callahan@penwool.com

Pendleton Woolen Mills  
PO Box 3030  
Portland, OR 97208-3030  
503.226.4801, Fax 503.535.5502  
Reorders 800.522.WOOL (9665)

  @PendletonWoolenMills

### pwmwhsl.com

Pendleton's wholesale site has current price lists, product information guides, point-of-sale images and more.

   @PendletonWm

## INTERNATIONAL ACCOUNT TERRITORIES

### ASIA/CANADA/AUSTRALIA SENIOR ACCOUNT MANAGER

Kevin Taylor, ph 503.535.5726  
kevin.taylor@penwool.com

### Canada

Ray Fine Enterprises,  
ph 1.819.684.5551  
wholesale@pendleton.ca

### EUROPE SENIOR ACCOUNT MANAGER

Laura Verdugo  
ph 503.535.5567  
laura.verdugo@penwool.com

### Japan

Minoya Co., Ltd.  
Mike Endo  
ph 058.279.3966  
hirotaka.endo@minoya.co.jp

### Australia

Harbour Supply Co.  
James Smart  
ph + 61 (0)457 922 308  
james@harboursupplyco.com.au

### Europe, Great Britain, Italy, Spain, Portugal, Switzerland, France, Netherlands, Germany, Austria, Scandinavia, Finland, Baltics

Options, Joe Sharpe  
ph + 44 20 7609 9889  
info@options.org.uk

## UNITED STATES ACCOUNT MANAGER TERRITORIES

### Northwest Region

HOME & ACCESSORIES  
Jordan Mortimore, ph  
541.678.1592  
jordan@highcamptrading.com

### Northwest Region

WOMEN'S & MEN'S  
Allison Bowes, c 503.928.1069  
sales@thedeliverygroup.com

### Northern California

ALL DIVISIONS  
Heidi Oneto, c 209.602.0596  
honeto.sales@gmail.com

### Southern California

ALL DIVISIONS  
Casey Fleming, ph 714.803.7873  
ksea.sales@gmail.com

### Rocky Mountain Region

ALL DIVISIONS  
Jeanette Palmer, c 310.729.2083  
fx 949.419.2295  
jeanettepalmer.pendleton@gmail.com

### Upper Midwest Region

ALL DIVISIONS  
Steve Schroeder, c 952.212.7447  
ssdarth44@gmail.com

### Central Region (TX, OK, AR, LA)

MEN'S, HOME & ACCESSORIES  
Amy Trapp Shaffer, ph 214.289.6555  
trapp1230@me.com

### Central Region (IA, KS, NE, MO)

MEN'S, HOME & ACCESSORIES  
Lynn Fisher, ph 913.481.8587  
lynn.fisher@penwool.com

### Central Region

WOMEN'S & ACCESSORIES  
Jack Hunton c 214.533.4807  
ph 214.688.1551 fx 214.749.0322  
jack@huntonandcompany.com

### Midwest Region

ALL DIVISIONS  
Bill Linsmayer, ph 269.921.5229  
bill@scoutsalesco.com

### Southeast Region

ALL DIVISIONS  
Michael Novak, ph 410.804.3118  
mnovak1170@hotmail.com

### Northeastern Region

ALL DIVISIONS  
Geoff Manning, ph 401.635.2391  
geoff@manningoutdoor.com

### New York City *Showroom by appointment only:*

Geoff Manning, ph 401.635.2391  
214 W. 39th Street #1007  
New York, New York 10018  
geoff@manningoutdoor.com

## LICENSED PARTNERS

### Britannica Home Fashions

Fashion bedding  
646.977.7719  
tlee@bhf-usa.com

### Carolina Pet

Pet products  
803.364.9333  
info@carolinapetcompany.com

### Chronicle Books

Notebooks, note cards, books  
& games  
customer.service@hbgsusa.com

### Downlite

Down bedding, pillows & throws  
513.229.3696  
bmack@downlite.com

### Fiberlok

Mouse pads and coasters  
970.221.1200  
sales@fiberlok.com

### Fox River Mills

Hosiery  
1.800.247.1815  
cs@foxrivermills.com

### Olivet International

Luggage  
212.239.7311 x20  
nicolek@olivetintl.com

### Phoenix Footwear

Footwear  
800.526.8151  
orders@phxg.com

### Proximo Spirits

Whisky  
tbledsoe@proximospirits.com

### Shwood

Sunglasses  
503.367.9252  
sales@pendletoneyewear.com

### Southwest Looms

Wool rugs  
919.489.8362  
info@southwestlooms.com

### Sunbrella

Performance fabrics  
336.586.1235  
agent3@glenraven.com

### Yune Yoga

Yoga mats and accessories  
415.756.9352  
info@yuneyoga.com